



# UPdate

PacificRimAlliance.org

Official Publication

Published Quarterly

Volume 19 | Issue 4

Winter | 2014/2015

*Skiing is a Dance in which the Mountain always Leads.*

## **Snow Industry**

- *Carbon Offsets*
- *Early Season Lift Deals*
- *Park City Expansion*
- *World Cup Championships comes to Vail • Beaver Creek*

## **Upcoming Trips & Events**

- *Ski Big White, Canada*
- *Cabo San Jose, Mexico Rescheduled*
- *Water Ski the Colorado River*

## **Far West & Council**

- *Upcoming Trips & Events*



## word from the **ALLIANCE**

### WINTER wonder

*Get a preview of winter to come!*

#### WINTER deals

It's not too late to get some of the best lift ticket deals ever. While the price of some of the passes have increased since spring, most have added resorts to their quiver of benefits. *Page 12.*

Don't forget about the free programs for 5th and 6th graders. A limited number of free lift tickets are available for a small registration fee.

January is **Bring A Fried to Ski** month. Check your favorite ski area for lesson, lift ticket and lodging deals.

#### BIG WHITE, april 1 – 11, 2015

We will again be closing the season in Big White, B. C., Canada. *Page 28.*

#### CABO, april 23 – may 3, 2015

We had to reschedule our Cabo trip due to the uninvited arrival of hurricane Odile in October. They have extended us the same great pricing. *Page 29.*

#### BIKING fridays

Don't forget about our bike rides around Mission Bay. Biking is a great way to stay in shape for skiing. Scheduled dates are at 10 AM on

December 26	January 9
February 13	March 20

#### 2015 water ski

We have our waterski dates for next year. Be sure to mark your calendars. *Page 30.*

June 19-21	July 24–26
July 10–12	Aug 21–23
Aug 7–9	Sept 25–27
Sept 11-13	Oct 23–25
Oct 9–11	

See you on the slopes. Be safe, have fun and put a lid on it. ■




### LATE BREAKING news

Temperature, more than precipitation, has factored heavily thus far into the 2014-15 season. Resorts in the Rockies are celebrating up to two feet of new snow in the past two days, while rain plagues other regions.

Ski areas in Idaho, Montana, and Wyoming are sitting near or above average in terms of snowpack for the season, while the Pacific Northwest has seen much of its precipitation fall in the form of rain.

In Canada, conditions appear to be better in the West than in the East. In British Columbia, Whistler Blackcomb is reporting base depths of about 50 inches. Sunshine Village in Alberta has all of its lifts running on about three feet. ■



*An ice ghost— chair after overnight rainfall.*

## table of CONTENTS

Interactive features of this publication include links that are activated by clicking on a logo or an underscored text. These features may not function properly on some mobile devices and in browsers. The pdf files are best viewed using a pdf reader app.

### ◆ Events Calendar

4-6

*Tripping around with Pacific Rim, LA Council, San Diego Council and Far West Ski Association*

Biking	6
Wine Maker Dinner	25
Hiking	26
Council Trips & Events	24-26
FWSA Trips	27
Big White	28
Cabo San Jose, Mexico (Rescheduled)	29
Water Skiing	30
FWSA Convention in San Diego	31

### ◆ Features

The Alliance	2
Equipment— Rent or Buy?	14
Fitness— Core Workout	15
Kid's Corner— Ski Trips	17
Safety	19-20
Giving Back	23 & 34
The Fine Print: Policies	35-36
Contact Us	36

### ◆ Member Posting

Where are they Now	8
--------------------	---

### ◆ Public Affairs

Snow Industry Bulletin	10-11
Ski Pass Deals	12
Substainability— Carbon Offsets	13
World Championships	9 & 16
Ski History— Sugar Bowl	18

### ◆ It's a Wrap

21-23

Water Skiing on Colorado River	21
Big White	22
San Diego Winter Gala	23

### ◆ Sign-Up Forms

Trips	32
Membership	33

**Update** is an official publication of Pacific Rim Alliance. Articles can be reproduced when credit is given to the appropriate person(s). **Update** is published quarterly by Pacific Rim Alliance, 10818 Viacha Dr., San Diego, CA 92124 USA. Phone 846-9469.

Catherine Ohl, Editor Graphic Deizgnz, Design / Production



**Water Ski Wrap — 21**



**Big White — 28**

#### Links...

- [Membership](#)
- [Trip Form \(pdf\)](#)
- [Liability Release \(pdf\)](#)
- [Trip Insurance](#)
- [Release/Waiver](#)
- [Ski History](#)
- [Past Publications](#)
- [Photo Gallery](#)



**Cabo — 29**



**Carbon Offsets — 13**

## EVENTS calendar

Details and flyers can be found under **TRIPS** at [PacificRimAlliance.org](http://PacificRimAlliance.org)



**4-7** **Ski Dazzle Expo** Annual snowsports show at LA Convention Center.  
<http://www.skidazzle.com/>.

**7-14** **Ski Big White**  
**Pacific Rim Alliance.**  
Ski the amazing early season powder at Big White. Trip package includes lodging, lift tickets and transfer from airport. Contact [Gene Fulkerson](mailto:Gene.Fulkerson@pralliance.org) / 858-467-9469. **FLYER**

**11-17** **Ski Aspen**  
**San Diego Council of Ski Clubs.** Aspen is known for being the Rocky Mountain playground of the rich and famous, but this authentic mountain town offers far more than just glitz and glam. Contact [Mike Sanford](mailto:Mike.Sanford@scscc.org) / 858-695-1442. **FLYER**

**18** **Holiday Happy Hour**  
**San Diego Ski Council.**  
Annual snow season kick-off the winter Happy Hour at Hotel del Coronado, 4-7 PM. Contact [Barbara Blase](mailto:Barbara.Blase@sdsc.org) / 858-270-0915.

**26** **Bike Mission Bay**  
**Pacific Rim Alliance.**  
Meet in the parking lot just east of the Bahia Hotel. Contact [Gene Fulkerson](mailto:Gene.Fulkerson@pralliance.org) / 858-467-9469.



**09** **Bike Mission Bay**  
**Pacific Rim Alliance**  
Meet in the parking lot just east of the Bahia Hotel. Contact [Gene Fulkerson](mailto:Gene.Fulkerson@pralliance.org) / 858-467-9469.

**31-7** **Ski Whistler**  
**Far West Ski Association.** Whistler Blackcomb is consistently ranked as North America's top ski and snowboard resort. Contact  
• **FWSA:** [Nancy Ellis](mailto:Nancy.Ellis@fwsa.com) / 530-414-8261  
• **San Diego:** [Alan Godwin](mailto:Alan.Godwin@fwsa.com) / 619-663-6626  
• **LA Council:** [Laura Priess](mailto:Laura.Priess@fwsa.com) / 818-364-8923



**13** **Bike Mission Bay**  
**Pacific Rim Alliance**  
Meet in the parking lot just east of the Bahia Hotel. Contact [Gene Fulkerson](mailto:Gene.Fulkerson@pralliance.org) / 858-467-9469.



**14-21** **Val d'Isere**  
**Far West Ski Association.** Located in the Rhône-Alpes region, Val d'Isere offers some of the best skiing in France. There are also pre and post trip options to Paris, Nice and Povenca. Contact [Debbie Stewart](mailto:Debbie.Stewart@fwsa.com) / 559-737-0882.

**16-21** **Revelstoke Heli-Ski**  
**Far West Ski Association.** Heli-ski with CMH. Package includes lodging, meals, snacks, skis, helicopter, avalanche training & equipment. Contact [Nancy Ellis](mailto:Nancy.Ellis@fwsa.com) / 530-414-8261. **FLYER**

**20** **Bike Mission Bay**  
**Pacific Rim Alliance**  
Meet in the parking lot just east of the Bahia Hotel. Contact [Gene Fulkerson](mailto:Gene.Fulkerson@pralliance.org) / 858-467-9469.

**30-4** **Ski Whitefish**  
**Far West Ski Association.** Package includes lodging at Grouse Mtn. Lodge, lift tickets, parties, ground transfers. An optional snowshoe excursion to Glacier National Park has been added. Contact [Nancy Ellis](mailto:Nancy.Ellis@fwsa.com) / 530-414-8261. **FLYER**



Mission Bay Bike Riding



April  
2015

### 4-11 Ski Big White Pacific Rim Alliance.

Ski the amazing late season powder at Big White. Trip package includes lodging, lift tickets and transfer from airport. Contact [Gene Fulkerson](mailto:Gene.Fulkerson@pralliance.org) / 858-467-9469. [FLYER](#)

### 4-11 Bike / Barge Italy San Diego Council.

Barge trip from Mantova to Venice— 7 nights, 4 tours, guide, bike, all meals for \$1600. Air not included. Contact [Eileen Sanford](mailto:Eileen.Sanford@pralliance.org) / 858-695-1442. [FLYER](#)

### 15 Bike Mission Bay Pacific Rim Alliance

Meet in the parking lot just east of the Bahia Hotel. Contact [Gene Fulkerson](mailto:Gene.Fulkerson@pralliance.org) / 858-467-9469.

### 23-03 Cabo San Jose, Mexico

**Pacific Rim Alliance.** Enjoy warm sunny days, idyllic beaches and exciting adventures in the all-inclusive Royal Solaris. Contact [Catherine Ohl](mailto:Catherine.Ohl@pralliance.org) / 858-405-0637. [FLYER](#)



May  
2015

### 08 Bike Mission Bay Pacific Rim Alliance

Meet in the parking lot just east of the Bahia Hotel. Contact [Gene Fulkerson](mailto:Gene.Fulkerson@pralliance.org) / 858-467-9469.



June  
2015

### 4-7 83<sup>rd</sup> Convention Far West Ski Association.

Join Far West in San Diego for the 83<sup>rd</sup> Annual FWSA Convention and our "Salute to San Diego." There will be a Sunset Dine Out aboard Midway, Silent Auction & Ski Show, Travel Expo, Leadership Academy Contact [Eileen Sanford](mailto:Eileen.Sanford@pralliance.org) / 858-695-1442. [FLYER](#)

### 15 Bike Mission Bay Pacific Rim Alliance

Meet in the parking lot just east of the Bahia Hotel. Contact [Gene Fulkerson](mailto:Gene.Fulkerson@pralliance.org) / 858-467-9469.

### 19-21 Water Ski Weekend

**Pacific Rim Alliance & Radar River Rats.** Water ski on the Colorado River. We operate out of Needles Marina in Needles. Camping, equipment, food and drink included. Contact [Patricia Ortiz](mailto:Patricia.Ortiz@pralliance.org) / 323-651-0686.

### 19-25 Mississippi River Cruise

**Far West Ski Association.** This trip will be 1 night in New Orleans and a 3-night round-trip paddleboat cruise aboard the American Queen from New Orleans with stops at Oak Alley Plantation and Baton Rouge, LA. Contact [Nancy Ellis](mailto:Nancy.Ellis@pralliance.org) / 530-414-8261. [FLYER](#)



July  
2015

### 10-12 Water Ski Weekend

**Pacific Rim Alliance & Radar River Rats.** Water ski on the Colorado River in Needles. Camping, equipment, food and drink included. Contact [Patricia Ortiz](mailto:Patricia.Ortiz@pralliance.org) / 323-651-0686

**17 Bike Mission Bay**  
**Pacific Rim Alliance** Meet in the parking lot just east of the Bahia Hotel. Contact [Gene Fulkerson](mailto:Gene.Fulkerson@pralliance.org) / 858-467-9469.

### 24-26 Water Ski Weekend

**Pacific Rim Alliance & Radar River Rats.** Water ski on the Colorado River in Needles. Camping, equipment, food and drink included. Contact [Patricia Ortiz](mailto:Patricia.Ortiz@pralliance.org) / 323-651-0686



August  
2015

### 7-9 Water Ski Weekend

**Pacific Rim Alliance & Radar River Rats.** Water ski on the Colorado River in Needles. Camping, equipment, food and drink included. Contact [Patricia Ortiz](mailto:Patricia.Ortiz@pralliance.org) / 323-651-0686

**14 Bike Mission Bay**  
**Pacific Rim Alliance** Meet in the parking lot just east of the Bahia Hotel. Contact [Gene Fulkerson](mailto:Gene.Fulkerson@pralliance.org) / 858-467-9469.

### 21-28 Rhine Cruise

**San Diego Council.** Take the Viking Ship from Amsterdam to Basel— 7 nights, 6 tours, 4 countries for \$2,456 pp. Air extra. Book directly with Universal Travel. Contact [Eileen Sanford](mailto:Eileen.Sanford@pralliance.org) / 858-695-1442. [FLYER](#).

### 2015 Water Ski Trips to the Colorado River

June 19-21

July 10-12

July 24-26

August 7-9

August 21-23

September 11-13

September 25-27

October 9-11

October 23-25

## EVENTS calendar

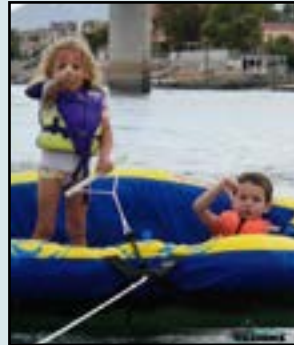
Details and flyers can be found under **TRIPS** at [PacificRimAlliance.org](http://PacificRimAlliance.org)

### in the Works...

**TBA Italy 2016**  
Pacific Rim Alliance.  
Ski Northern Italy followed by a trip to a major city. Contact [Gene Fulkerson](mailto:Gene.Fulkerson@pacifrimalliance.org) / 858-467-9469.

**TBA New Zealand**  
Pacific Rim Alliance.  
New Zealand is all about the outdoors, and the fun doesn't stop in winter. In fact, it gets even better, with an array of activities that you can only do when it's cold. Contact [Gene Fulkerson](mailto:Gene.Fulkerson@pacifrimalliance.org) / 858-467-9469.

**TBA Bonaire 2015**  
Far West Ski Association. Known as the "Soft Coral Capital of the World, Fiji is home to great diving. Contact [Randy Lew](mailto:Randy.Lew@fwsa.org) / 530-304-0802.



### Pacific Rim Events [pacifrimalliance.org](http://pacifrimalliance.org)

- Bike One Friday / Month [Gene Fulkerson](mailto:Gene.Fulkerson@pacifrimalliance.org)
- Big White April 4–11, 2015 [Gene Fulkerson](mailto:Gene.Fulkerson@pacifrimalliance.org)
- Cabo San Jose Apr 23–May 3, 2014 [Catherine Ohl](mailto:Catherine.Ohl@pacifrimalliance.org)
- Water Ski June – Oct [Patricia Ortiz](mailto:Patricia.Ortiz@pacifrimalliance.org)
- Dinner for MS October 3, 2015 [Gene Fulkerson](mailto:Gene.Fulkerson@pacifrimalliance.org)
- New Zealand Tentative [Gene Fulkerson](mailto:Gene.Fulkerson@pacifrimalliance.org)
- Italy Tentative 2016 [Gene Fulkerson](mailto:Gene.Fulkerson@pacifrimalliance.org)
- Telluride, CO Jan 30–Feb 6, 2016 [Gene Fulkerson](mailto:Gene.Fulkerson@pacifrimalliance.org)



### LA Council Events [lacouncil.org](http://lacouncil.org)

- Whistler Jan 31–Feb 7, 2015 [Laura Priess](mailto:Laura.Priess@lacouncil.org)
- Snow Gala Nov 2015
- Telluride, CO Jan 30–Feb 6, 2016



### San Diego Events [skisandiego.org](http://skisandiego.org)

- Whistler Jan 31–Feb 7, 2015 [Alan Godwin](mailto:Alan.Godwin@skisandiego.org)
- Bike / Barge April 4–11, 2015 [Eileen Sanford](mailto:Eileen.Sanford@skisandiego.org)
- Rhine Cruise Aug 21–28, 2015 [Eileen Sanford](mailto:Eileen.Sanford@skisandiego.org)
- Winter Gala Nov 2015
- Aspen, CO Dec 2015
- Telluride, CO Jan 30–Feb 6, 2016



### FAR West Travel & Events [fwsa.org](http://fwsa.org)

- Whistler Jan 31–Feb 7, 2015 [Nancy Ellis](mailto:Nancy.Ellis@fwsa.org)
- Val d'Isere March 14–21, 2015 [Debbie Stewart](mailto:Debbie.Stewart@fwsa.org)
- Heli-Ski March 16–21, 2015 [Nancy Ellis](mailto:Nancy.Ellis@fwsa.org)
- Whitefish Mar 30–Apr 4, 2015 [Nancy Ellis](mailto:Nancy.Ellis@fwsa.org)
- Convention June 4–7, 2015 [Eileen Sanford](mailto:Eileen.Sanford@fwsa.org)
- River Cruise June 19–25, 2015 [Nancy Ellis](mailto:Nancy.Ellis@fwsa.org)
- Bonaire Fall 2015 [Randy Lew](mailto:Randy.Lew@fwsa.org)
- Telluride Jan 30–Feb 6, 2016 [Nancy Ellis](mailto:Nancy.Ellis@fwsa.org)

### wanna RACE?

If you'd like to test your skills in a race course, as a member of Pac Rim you can race in League, Council and Far West sponsored races. More information at [fwra.com](http://fwra.com). Here's a list of the races. (Tentative)

December 10–12, 2014  
December 13, 2014  
January 7–9, 2015  
January 10, 2015  
February 4, 2015  
February 21, 2015  
March 6–8, 2015  
March 27–29, 2015

Rokka GS Race/Ski/Board Camp  
Rokka/Ullr/SDAL Race 1 Slalom  
Rokka Slalom Race/Ski/Board Camp  
Rokka/Ullr/SDAL Race 2 GS  
Rokka/Ullr/SDAL Race 3 (Whistler)  
Rokka/Ullr/SDAL Race 4 Slalom  
SoCals Clinic, GS & Slalom  
FWRA Championships GS & Slalom



Meet at 10 AM  
in the parking lot  
East Bahia Hotel  
Mission Bay

Dec 26  
Jan 9  
Feb 13  
Mar 20  
Apr 17  
May 8  
June 12  
July 17

### Mission Bay

#### About the Ride—

- Easy 20 miles around the bay!
- Can add 3 – 5 miles by taking the short or long way around Fiesta Island
- Bring water, helmet, sunscreen, extra tube and money for lunch
- **RSVP 858-405-0637**

# MEMBER posting

## COUNCILS selects MAN & WOMAN of the YEAR

*Council Men and Women of the Year are chosen by their peers in recognition of their many contributions to organized skiing. They will represent their council at the Far West Ski Association Convention to be held in San Diego, CA, June 4–7, 2015.*

Pacific Rim Alliance belongs to two councils in the Far West Ski Association. This gives members the opportunity to participate in many of the activities and events they host throughout the year.

Both councils annually kick off the ski season with a Gala to honor the Men of Women of their member ski & board clubs who have contributed the most to their club, council, Far West and nationally in the promotion of snow sports.

Los Angeles Council hosted their Gala at the Hilton Woodland Hills on Saturday, November 1, 2014. **Dave Felker**, Century City, and **Karyn Pfening**, Wailers, were honored as their Council's Man and Woman of the Year. The Fay Mumbauer Award was presented to **Dave Felker** for his long-term contributions to skiing and Los Angeles C.

San Diego Council experienced "An Evening in Paris" at the Town & Country, November 8, 2014. **Jerry Stokely**, San Diego Ski Club, and **Debbie Schroeder**, Torrey Pines, were honored as their Council's Man and Woman of the Year. **Laura Meldrum**, Torrey Pines, was awarded the annual Joe Harris Award. ■



photo courtesy Los Angeles Council

*LA Council's Woman & Man of the Year— Dave Felker & Karyn Pfening.*



photo courtesy Los Angeles Council

*LA Council's Fay Mumbauer award for 2014 was given to Dave Felker.*



photo courtesy Catherine Ohl

*San Diego's Man & Woman of the Year— Jerry Stokely & Debbie Schroeder.*



photo courtesy Debbie Schroeder

*San Diego's Joe Harris award for 2014 was given to Laura Meldrum by Cheryl.*

## happy BIRTHDAY

### December

- 1 Patrick Loo
- 2 Christel Chang
- 3 Donna Huston
- 5 Pat Holzinger
- 6 Len Danczyk
- 7 Bob Berg
- 10 Dick Anderson
- 17 Barbara Bontempo
- 17 Bruce Malinoski
- 17 Dean Smith
- 18 Susan Buckley
- 18 Therese Frey
- 22 Nick Friedman
- 26 Sharon Bays
- 29 Kim Gerring

### January

- 3 Jeff Beeman
- 7 Nadya Penoff
- 10 Anne Coniglio
- 11 Hans Iliew
- 12 Jim Knapp
- 12 Bob Miller
- 13 Viki Turnipseed
- 16 Kristen Benson
- 21 Celia Lemon
- 27 Phil Harris
- 29 Brigitte Cox

### February

- 1 Lynda Johnson
- 2 Thomas Delahanty
- 2 Fay Mumbauer
- 3 Susan Corum
- 5 Bob Schulz
- 6 Sue Sindelar
- 14 Karen Abbott
- 16 Michael O' Connor
- 21 Richard Frey
- 25 Marie Lafayette
- 28 Mark Mathis
- 28 Kelly Roberts

# REMEMBERING franco

## Alfred Frank Antonicelli

01/09/1925 – 12/30/2014

*Those we've loved are never really lost to us...  
We feel them in so many special ways...  
Memories of times together will never be gone...*

Alfred Frank Antonicelli, known to most as Franco, was born in San Diego on January 9, 1925. His father, Pasquale, immigrated to the United States in 1913 at the age of 18, from his native Italy, Gioia del Colle. After moving to San Diego he met a beautiful young Italian girl, Nunziella Beltipo, whom he married. Franco was their only child. Nunziella died at the age of 28 from tuberculosis.

During her hospitalization, Franco was foster cared for by Kate Sessions, the botanist and "mother of Balboa Park." Franco's father was Kate Sessions most loyal and dedicated employee, serving as her right hand man in the planning and development of Balboa Park.

Franco experienced the loss of his mother at the young age of eight years old. His father returned to his village in Italy, met and later married Angela Isdraele Romano.

Angela raised Franco into adulthood, becoming as close to him as any natural mother could be. Both Franco and his father, Pasquale, loved the United States, one serving in World War I and Franco in World War II. Franco's service included over two years in the Pacific as a Navy radarman aboard a destroyer escort, the Bowers. During his service he received numerous decorations that included the Purple Heart.

Franco returned to San Diego after an honorable discharge to join the family business with his father, who by then

had opened his own nursery business on Washington Street in Mission Hills. The family's collective dream of success in the U.S. was becoming a reality. The nursery business served as the foundation for what became the largest land holding in Mission Hills by any single property owner.

Franco never lost his rather humble approach to life nor his love for his long lasting heritage. He met and married the true love of his life and soul mate, Sara Caburlotto, in 2011, a lovely Italian lady whom he too met in Italy in 2002.

Franco was a remarkable man of the utmost integrity, a most generous philanthropist to many in need, a founding figure in the Mission Hills community, a wonderful friend to many, a continuing presence to his immediate family and a most loving husband. He will be missed by all that knew him and will remain in our hearts forever.

A celebration of his life will be held on his 90th birthday at 10:00 a.m., on January 9, 2015, at St. Vincent de Paul Church, 4080 Hawk Street, San Diego 92103. Interment immediately follows at Holy Cross Cemetery, 4470 Hilltop Drive, San Diego 92102.

In lieu of flowers, donations may be made to St. Vincent de Paul School or Rady Childrens Hospital. The family would like to thank everyone for their support and love in remembering Franco.



*Franco with Jeanie*



*Franco with Larry*



*Franco with Allison & Bob*

See more at <http://www.legacy.com/obituaries/utsandiego/obituary.aspx?n=alfred-frank-antoncicelli&pid=173754199&#sthash.A9elc9Zo.dpuf>.

Franco was a gentleman and one of the kindest, most generous men we know. We will remember Franco as a terrific snow skier, a real gentleman, an amusing story teller and a wonderful friend. ■



## LINDSEY VONN inspiration

*Lots of blood, sweat & tears went into Lindsey's comeback*

"Lindsey Vonn: The Climb," a one-hour special chronicling the 2010 Olympic downhill champion's comeback from two major knee surgeries, will premiere on NBC on January 25, 2015 at noon PST.

On February 5, 2013, Lindsey crashed in the World Championships super-G in Schladming, Austria. She suffered complete MCL and ACL tears in her right knee, was airlifted off the course and needed season-ending surgery.

Lindsey reinjured her knee while training on November 20, 2013, re-tearing her right ACL. She attempted a comeback for the Sochi Olympics, but her knee gave out in a race in Val d'Isere, France, one month later. She withdrew from Sochi and had another surgery.

Lindsey returned to skiing in competition in December and won two of her first four races, moving within one victory of the all-time women's World Cup record.

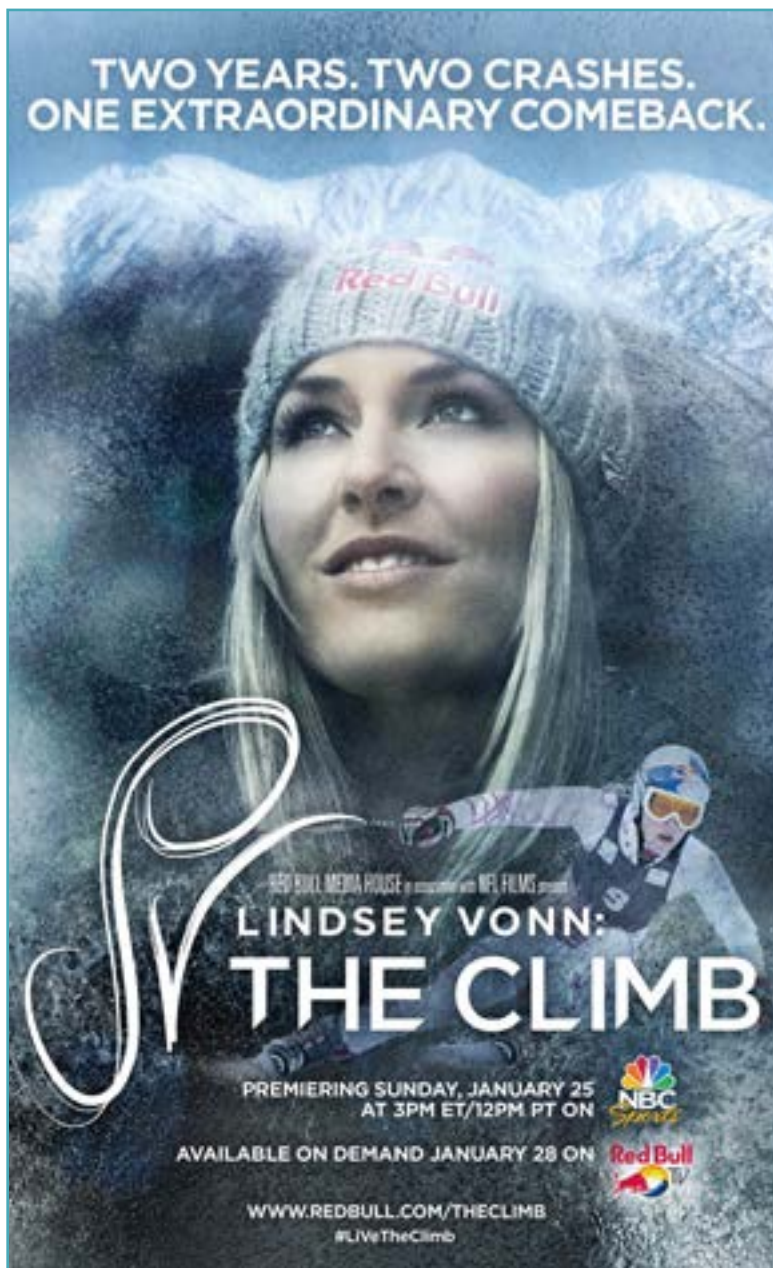
The documentary follows Lindsey physical and emotional struggles over a two-year journey back to the top of her sport, including having to watch the Sochi Olympics with her family at home.

This film is a compelling and very human portrait of an extraordinary athlete fighting pain and uncertainty to regain her place as the dominant figure in one of the most demanding and dangerous sports in the Olympic world.

Lindsey will return to the World Championships near her home in Vail, CO, in February, with unprecedented coverage from NBC Sports and Universal Sports.

Encore presentations of "Lindsey Vonn: The Climb" will air on NBCSN beginning in February. The film will be available digitally on Red Bull TV starting January 28, 2015.

The film was produced by Red Bull Media House, in association with NFL Films and NBC Olympics. ■



poster courtesy Red Bull Media House

### World Alpine Skiing Championships

Every event of the World Alpine Skiing Championships will be covered live for the first time in 2015, across NBC, NBCSN, Universal Sports and NBC Sports Live Extra.

The 2015 World Championships are in

Vail/Beaver Creek, CO, from February 2-15, 2015, the first time worlds will be held outside of Europe since 1999 (also in Vail). They will be the biggest Alpine skiing event in the U.S. since the 2002 Salt Lake City Olympics.

NBC, NBCSN and Universal Sports will combine for over 25 hours of coverage, include 16 hours live. NBC will have six hours total, NBCSN will have 8.5 and Universal Sports will have 13.

Live Extra will stream all coverage on NBC and NBCSN. ■ page 16

## SNOW INDUSTRY bulletin

### exciting CHANGES for skiers in the west

Excerpted from *saminfo.com*

#### New Owner for Durango & Snowbowl

A Durango businessman, **James Coleman**, has bought Durango Mountain Resort (DMR) and Arizona Snowbowl. Further, he is teaming them with two New Mexico areas, Sipapu and Pajarito, to form a four-resort group that collectively tallies 3,088 acres, 26 lifts, more than 200 trails and 13 terrain parks.

Coleman has committed to retaining the current management teams at both ski areas. According to various reports, Coleman plans to unite the four resorts under a new, as yet unnamed company.

In 2014, Sipapu and Pajarito unveiled the New Mexico Power Pass, New Mexico's only season pass with unrestricted access to two ski areas plus free skiing at more than 25 partner mountains in New Mexico, Colorado, Utah and throughout the country. Coleman said that Durango and Snowbowl will maintain their existing pass partnerships, which offer free or discounted lift tickets to select season passholders.

#### Squaw Valley new gladed area.

#### Squaw's Glading Boosts

More than 5,000 dead or diseased trees were removed to improve the natural habitat, reduce the risk of wildfire, and, just as importantly, provide unprecedented access to tree skiing and riding at Squaw Valley.

Lower-level vegetation that could potentially serve as fire fuel was removed from the East end of the ski resort from Red Dog Face to Poulsen's Gully. Squaw removed dead and diseased trees from the targeted area via helicopter rather than skidding the trees in sensitive areas, minimizing environmental impacts. Most of the trees will be processed for timber; remaining materials will be chipped for future use.

This project will open nearly 100 acres of enhanced upper-intermediate to expert terrain, including three newly designated glade areas as well as a new connector trail to ease access back to the lifts. This terrain was previously inaccessible, or extremely limited, due to dense standing and fallen trees, which made it difficult for skiers and riders to negotiate the terrain safely.

Thinning provides valuable benefit by effectively utilizing the available water for the most viable trees, and the removal of dead or diseased trees dramatically reduces the risk of fire. ■

### VAIL EPIC discovery plan

The U.S. Forest Service has published a final record of decision regarding Vail's comprehensive summer activities proposal, "Epic Discovery, a Summer Mountain." The decision is the first to stem from passage of the Ski Area Recreational Opportunities Act in 2011.

Epic Discovery encourages "learning through play," promoting environmental education and conservation through a variety of experiences. The main approved activities include zipline tours, mountain biking, a mountain coaster, and an observation deck. Construction will begin in summer 2015. All the activities are expected to be operational by summer 2016.

- Micro-interpretive centers for education, integration and activities around the mountain for an hands on experience.
- Game Creek and Front Side guided zipline tours incorporate zips, aerial bridges, and forest education.
- Expanded hiking and mountain biking trails will offer comprehensive interpretive and directional signage.
- Family Forest Adventure Park, a playground of rope challenges and bridges, introduces young children to the forest.
- Wildwood Observation Deck provides a panoramic view over the Back Bowls.

Following passage of the Ski Area Recreational Opportunities Act in 2011 the Epic Discovery proposal was submitted in July 2012, and underwent a comprehensive environmental review. ■



# Park City Canyons **RESORT**

*Announcing the most impactful capital plan in the history of U.S. ski industry.*

Vail Resorts plans to link two of North America's greatest ski areas – creating the largest resort in the United States with 7,300 acres of skiable terrain. The plan outlines more than \$50 million worth of resort improvements in 2015 that include:

## The Interconnect Gondola

An eight-passenger, high-speed gondola running from the base of the existing Silver Lift at Park City to the Flatiron Lift at Canyons. When conditions allow, gondola passengers will be able to unload at the top of Pine Cone Ridge and ski or ride directly down to Park City's Thaynes Canyon trail via gated ski access or to the Iron Mountain area at Canyons through new trails that will be created from Pine Cone Ridge.

## Park City Lifts Upgrade

King Con will be upgraded from a 4-person to 6-person high-speed detachable chair, meaning increased lift capacity. Motherlode will switch from a fixed-grip triple to a 4-person high-speed detachable, similarly improving the number of guests it can carry.

## Restaurant Upgrades

A completely new Snow Hut restaurant, replacing the current Snow Hut next to the base of Park City's Silverlode Lift and the Park City terminal for the Interconnect Gondola, will include 500 indoor seats and a top-of-the-line kitchen and culinary experience. Meanwhile, upgrades to Summit House will improve the flow of diners and increase seating. At Canyons, Red Pine

Restaurant will be renovated to the tune of 250 additional indoor seats.

## Other Improvements

The plan rounds out with additional snowmaking on two trails in Canyons' Iron Mountain area to handle increased skier traffic for Interconnect Gondola access. We'll also be putting almost \$5 million of "catch up" maintenance and upgrades at Park City, given the lack of spending at the resort over the past few years. This "catch up" maintenance spending is in addition to the normal annual maintenance capital for the two resorts of \$5 million.

It's the dawn of an exciting new era at Park City Mountain Resort and Canyons. Stay tuned for updates throughout the process. ■



## LIFT TICKET deals

### KIDS ski free at most resorts

*Early season lift packages are gone— here are some in-season discounts*

While most of the best season pass packages are no longer available, it doesn't mean there aren't still some lift tickets deals to be had.

With the cost of full-day lift tickets well over \$100 at many resorts, frugal families may find skiing too expensive this year. But instead of skipping the slopes all season, try these simple ideas to save big on lift tickets.

#### Liftopia

Deeply discounted tickets on [Liftopia.com](http://Liftopia.com). Know when and where you plan to ski? Head to Liftopia and buy your tickets in advance for up to 90% off regular price.

Liftopia sells discounted, date-specific lift tickets, rentals and lessons to more than 150 resorts in North America. You must buy in advance for the date you plan to ski, so purchase real early if you are planning to go over a holiday.

#### Local Stores

Buy your tickets in advance at local stores like Costco or REI. Most local ski shops offer discounted lift tickets when buying at the shop, but search online to find area-specific deals.

REI and Costco members can purchase discounted tickets in stores, but you will need to check with your local store to find out which tickets you can purchase, usually local mountains.

#### Shell Gas

BOGO FREE Lift Tickets with Shell Fuel Purchase. Skiers in California, Colorado, Michigan, Nevada, Ohio, Oregon and Washington can receive a BOGO voucher for participating ski resorts in California, Nevada, Colorado and Michigan



courtesy Big White

*Big White "Canada's Family Resort" has perfected the family fun vacation.*

with the purchase of 10 gallons of gasoline or more at Shell stations. You can find gas stations and ski areas at [skifreedeads.com](http://skifreedeads.com).

#### Geigerrig Pack

When you purchase a Geigerrig pack you receive a FREE High Adventure Pass that includes FREE lift ticket to ski resorts across North America, BOGO lift tickets FREE summer mountain biking passes and two FREE oil changes. The Geigerrig is an affordable (\$100+), innovative hydration pack with a unique pressurized bladder that is worth the money even without this valuable passport. For details visit [geigerrig.com](http://geigerrig.com).

#### Alta Boarding Pass Program

Fly in to Salt Lake City and ski at Alta the same day for half price with the new Boarding Pass program. Register online 24 hours in advance to convert your airline boarding pass into a half-price Alta lift ticket. Offer valid Monday through Friday during the 2014/15 winter season. Ticket is \$54 for adults and \$35.50 for kids. Visit [alta.com/boardingpass](http://alta.com/boardingpass).

#### Learn to Ski/Board Month

January's Learn to Ski or Snowboard Month is a nationwide program offering

great beginner packages that include lift tickets, rentals, and lessons at a minimal cost so newbies can get interested in snowsports. Check each resorts for details.

#### Kids Ski Free

Lots of resorts allows kids 5 or 6 under to ski FREE! Resorts include Utah, Brighton, Canyons, Eagle Point, Park City Mountain Resort, Powder Mountain, Snowbasin, Snowbird, Sundance and Solitude. Check with resorts in your area for their policies on kids skiing for free.



#### Senior Deals

While the senior age rises, the discounts have fallen but there are still a few resorts that offer FREE skiing. Seniors 70+ ski free at Angel Fire, Whitefish, Snow Valley and Monarch (69+). Skiers 80+ ski free at Taos and Alta. There may be others. ■

## SUSTAINABILITY

# understanding CARBON OFFSETS

*Heat-trapping greenhouse gases are now at record-high levels*

*Submitted by Catherine Ohl*

As we experience the start of what looks to be another crazy winter, we are hearing more about carbon neutrality, carbon offsets, carbon footprint, green standards, greenwashing and more.

**Carbon neutrality** begins with reduction. It takes a concentrated effort to produce less waste and use more renewable energy. After reduction has reached its limit, or its comfortable threshold, carbon offsets can make up for the rest.

So what exactly is a **carbon offset**? When you buy an offset, you fund projects that reduce greenhouse gas (GHG) emissions. The projects might restore forests, update power plants and factories, build solar or wind plants or increase the energy efficiency of buildings and transportation.

GHG emissions mix quickly with the air and, unlike other pollutants, spread around the entire planet. Because of this, it doesn't really matter where GHG reductions take place just as long as fewer emissions enter the atmosphere.

GHG emissions are a global problem. Yet it's much cheaper to reduce or absorb

emissions in developing regions of the world. Offsets are often less expensive than retrofitting a building, converting to renewable energy or eliminating auto emissions in developed nations. Carbon offsets let you pay to reduce the global GHG total instead of making radical or impossible reductions of your own.

Businesses and individuals often buy carbon offsets to reduce their **carbon footprint** or to build up their "green image." Voluntary offsets should not be used as an excuse to overindulge in the production of GHG and not feel guilty about it. Before buying offsets, people should first reduce their own emissions— limit travel, get a hybrid vehicle, choose energy-efficient appliances or convert to renewable energy.

The concept of buying carbon offsets gets confusing because you are actually paying for non-emissions—something that doesn't even exist. Since this offsetting is new territory, authenticity is being bought about with new **green standards**— Voluntary Carbon Standard (VCS), the Gold Standard and the Climate, Community and Biodiversity Standard. While these standards focus on different types of offsets, all of the



photo courtesy of Catherine Ohl

*Wind farm outside Palm Springs, CA.*

standards share the goal of bringing order to the booming carbon-offset business to prevent **greenwashing**.

Carbon offsets should encourage individuals and businesses to take responsibility for their part in global climate change. Offsets don't excuse excess, but should be viewed as an aid for people and the environment throughout the world. ■

*Driving, flying, electricity and natural gas emit CO<sub>2</sub> contributing to climate change.*



### Reduce

- Practice Conservation
- Reduce Use
- Reuse
- Recycle



### Neutralize

- Invest in projects that reduce or avoid carbon emissions



### Offset

- Support
  - wind farms
  - solar power
  - geothermal
  - reforestation



### Balance

- Decrease
- Reduce CO<sub>2</sub>

*Balance promotes a healthy environment & brighter future.*

# EQUIPMENT roll out SKIS/BOARDS rent/buy

*The most essential pick of ski equipment to own is your boots*

Everyone has their own opinion as to whether they should rent or buy ski equipment. The argument for and against is changing and very personal.

*The same reasoning for buying or renting skis applies to snowboards.*

## Buying

You can buy a ski for the conditions you plan to ski most of the time. You learn how your skis handle and get a feel for what they do best. You also learn how your ski performs in different conditions.



Your skis can also be mounted with bindings that are set up just for your boots, rather than the multi-adjustable and heavier rental bindings.

Financially, it might be less expensive to buy skis. This of course depends on the number of days and types of ski trips you typically take in a year. For instance:

- Top of the line new skis, poles and bindings will run you about \$1000.
- There's an additional cost of a bag for transporting, airline baggage charges, and the occasional tuning & wax.
- You can figure top of the line ski rental may cost around \$50 a day.
- Let's say a typical ski club person

averages one fly away trip a year and perhaps four two-day trips to the local mountain. If you do the math, you will break even in less than two years.

- Of course, if you buy new skis at the end of the season or used demo skis, your break even point will arrive sooner.

With your own skis, there is no waiting in line for rental equipment once you arrive on the slopes. You just have to click in and you're on the slopes.

There's no transporting skis. Carrying skis around is tough — they're long and unwieldy, and make getting on public transportation and through airports more difficult.

Most airlines now charge for travelling with skis. If your trip involves renting a car, you have to get a car large enough to fit the skis, or rent a ski rack. This means that for traveling by air, it's often cheaper to rent skis.

If you rent skis, you just hand them back at the end of the ski trip. Often when you rent skis you can leave them at the shop close to the slopes. No schlepping them back and forth from where you are staying.

## In Conclusion

If you're a beginner, or a child, you should rent skis so you can upgrade your skis as your skiing progresses.

Just because you own skis or a board doesn't mean you can't rent— like when you wake up to a foot of powder and you only brought your skinny skis.

Whether you choose to buy or rent depends on how often you ski, your level of skiing and how you travel to the slopes.

Whether you rent or buy, a must buy is your own custom fitted boots with proper sport orthotics. ■

## Renting

You can rent skis for the day's snow conditions — if you buy skis, you're going to end up skiing your skis in whatever the conditions. And you can potentially change the ski during the trip if conditions change.



# FITNESS on the move

## WORKOUT made simple

Customize your 20-minute workout with 3 simple bodyweight exercises.

submitted by Gene Fulkerson

When putting together a workout choose exercises that won't have you using the same muscle groups throughout.

This 20 minute workout incorporates two leg muscles and one upper body. The point is do each exercise for 30 seconds, rest 10 seconds. Complete the circuit 10 times.

Remember, each movement must be performed properly and with full range of motion.

### Spider Lunges

**Do**

- Start in the top of a pushup position.
- Bring your right foot to the outside of your right hand.
- Land with a flat foot.
- Bring your foot back to the starting position.
- Repeat on other side.
- Maintain a strong plank position throughout.

**Don't**

- Allow your shoulders to move away from directly over your hands.
- Allow your hips to sag.

### Side Lunges

**Do**

- Keep your chest up.
- Shift your weight through your midfoot and heel.
- Lunge as low as your flexibility allows.

**Don't**

- Let your knees travel forward past your toes.

### Plank

**Do**

- Plant your hands under your shoulders, or slightly wider apart.
- Squeeze your glutes. (That would be your butt).
- Keep your body in a straight line from the top of your head through your feet.
- Tighten your core.
- Tuck your chin.
- Fix your gaze on the floor, either in between or just beyond your hands.

**Don't**

- Let your butt lift or sag.
- Lift your head.
- Hold the position if your form is suffering

**Make it easier**

- Hold the position for a shorter period of time. ■

championships **RETURN**

## WORLD CUP Vail • Beaver Creek 2015

*Vail offers lots of free events—concerts, parties and all the races*



The 2015 FIS Alpine World Ski Championships in Vail and Beaver Creek will showcase over 700 athletes from more than 70 nations.

These World Championships represent the largest and most impressive collection of ski racing talent in the world, second only to the Olympics.

The tradition of alpine ski racing has been interwoven throughout Vail and Beaver Creek's history since Vail Mountain opened to the world in 1962. Founded by a ski racer, Vail hosted its first racing event, a U.S. Ski Team training camp, one week after opening and went on to host numerous World Cup races.

The prestigious FIS Alpine World Ski Championships have been held in the U.S. only three times before, including 1989 and 1999 for which the Vail Valley also played host, firmly establishing the community as the ski racing capital of North America.

Vail is set to serve as the official hub of the ceremonies and nightly festival events – concerts, parties, art and culinary features, a big-screen stadium

and more – from February 2 through 15, while Beaver Creek will host the majority of the competition – all of which is free to spectators, unlike championships in Europe!

Vail will also host racing events at Golden Peak, including the Nation's Team Event (February 10) and the Men's Giant Slalom and Slalom qualification competitions (February 12 and 14).

Stadium seating at all races is free and open to the public. Spectators can access all races for free by bus, or by taking Trail 2015 (Beaver Creek Races).

The 2015 World Championships will showcase a variety of free concerts and surprise performances from renowned artists. Headliners will take the stage nightly in Championships Plaza (Solaris), Vail, at 7pm following the day's races and Medals Ceremony. ■

### NBC Network Line-Up—

To see training runs and encores check the Universal Sports Network schedule.

DATE	EVENT	TV	Time (PST)
2/3	Women's Super G	NBCSN	10:00 AM
2/4	Men's Super G	NBCSN	10:00 AM
2/6	Women's Downhill	NBCSN	10:00 AM
2/7	Men's Downhill	NBC	11:30 AM
2/8	Men's Super Combined- Slalom	NBC	1:00 PM
2/9	Women's Super Combined- Slalom	NBCSN	1:00 PM
2/12	Women's Giant Slalom Finals	NBCSN	1:00 PM
2/13	Men's Giant Slalom Finals	NBCSN	1:00 PM
2/14	Women's Slalom Finals	NBC	1:30 PM
2/15	Men's Slalom Finals	NBC	1:30 PM



**KIDS' korner**

**GOOD STUFF** for the kids & grandkids

*ski tips from —* **TOP KID INSTRUCTORS**

We want our kids and grandkids to love skiing and riding as much as we do. So here's a few tips from the experts— kid instructors.

Talk about the trip long before you go and continue to talk about it more and more as the date approaches. They will get so excited.

— Mya Frantti, Deer Valley, Utah

Have the kids try on skis walk around in boots so the feeling is familiar.

— Mya Frantti, Deer Valley, Utah

Dress kids for comfort—layers are best. It can make things easier to remove clothing if they become warm, and layers keep them warm if it's cold outside Also put hand warmers in their pockets just in case. — Mary Flinn Ware, Park City Mountain Resort, Utah

Always protect kids' eyes with goggles or glasses and their skin with sunscreen. Higher elevations can make you learn this lesson the hard way. — Mary Flinn Ware, Park City Mountain Resort, Utah

Arrive early, preferably the day prior to get rentals if needed, to get tickets in hand and hopefully avoid lines during peak season. It is great to let your children know where they are going and what will take place throughout the day, to reassure them. — Mary Flinn Ware, Park City Mountain Resort, Utah



photo courtesy of Val Thorens

Some children will not do well in a group lesson and should be considered for private instruction. Most kids enjoy



photo courtesy of GrandTarghee

being around others their own age and ability. A good instructor will engage the group with social interaction as well as ski improvements and will end the day with excitement. — Dave Hartley, Steamboat, Colorado



photo courtesy of Vail Resorts

Kids learn differently than grown-ups. Most kids need to get the basic idea of what you want them to do, and then they need to go do it. Repetition with coaching is the prescription for children. They will learn by doing and not realize that they are getting taught something. — Dave Hartley, Steamboat, Colorado

Before you try and teach your child to ski, make sure you have solid skiing skills, so you can completely focus on them. And make learning a game, not just talk.

Games like pizza/French-fries and red light/green light are great. — Mya Frantti, Deer Valley, Utah

Terrain and ability selection are critical. Ski where they can ski, not where you want to ski. — Mya Frantti, Deer Valley, UT

Pace yourself. Let them learn at their own speed. When they get tired, stop and have some hot chocolate, make a snow cone or build a snowman. Don't rush their time to explore and learn. — Mya Frantti, Deer Valley, Utah



photo courtesy of Big White

Have your child show you what they learned in their ski class. It's amazing how psyched a kid can become to show a parent their new trick, and likely the parent will be amazed. — Dave Hartley, Steamboat, Colorado ■

## HISTORY Sugar Bowl

# celebrating SEVENTY-FIVE YEARS

*Starred with Goofy in "The Art of Skiing."*



*Lillian Disney, Diane Disney, Hannes Schroll and Walt Disney at Sugar Bowl.*

In the 1941 Walt Disney cartoon "The Art of Skiing," Goofy slips and slides out of the shed-roofed Sugar Bowl Ski Resort lodge, where he's bunking, and heads to the slopes for several spectacular spills. In the background, there's occasional melodic yodeling performed by resort founder Hannes Schroll, an Austrian ski racer and instructor who also spent time at Yosemite National Park.

The yodeling has declined markedly since the ski area opened 75 years ago, but the still privately owned resort and lodge looks much as it did in 1939. Moreover, the black-diamond runs remain as challenging.

In the last few years, Sugar Bowl has invested \$20 million in upgrades, such as adding the Crow's Peak lift. Sugar Bowl also acquired the nearby 6,000-acre Royal Gorge cross-country ski resort and is investing \$750,000

in improvements. With additions and changes, Sugar Bowl now has 102 trails spread over 1,650 acres, with 13 lifts and slopeside parking at the foot of the Mt. Judah Express.



Disney, an early investor and an avid skier, as well as the many other Hollywood luminaries who frequented Sugar Bowl in its early days, would still feel at home in the resort's car-free core. Most homeowners at the resort

history & photos courtesy SugarBowl

were members of prominent San Francisco families, but film stars such as Robert Stack, Jean Arthur, Claudette Colbert, Errol Flynn and Marilyn Monroe also skied at Sugar Bowl.

There are other Disney connections at Sugar Bowl as well, including the renamed Mt. Disney (known before 1939 as Hemlock Peak), which rises to nearly 8,000 feet. The Donald Duck run, off the Disney Express chairlift, is an expert slope between the Eagle and Pony Express pistes. Not a bad return for an initial \$2,500 investment by Disney, who skied at the resort several times with Schroll and fellow Austrian Bill Klein, who directed the ski school until 1957.



The resort, which is on the west side of Donner Pass and gets as much as 500 inches of snow each winter, was the first in the Sierra to have a chairlift (a single-seater). For years, it was the site of the Silver Belt ski race, which drew top competitors from around the world.

Today, Daron Rahlves, who won 12 World Cup races and competed in four Winter Olympics for the U.S., is one of the resort's ambassadors. On March 14 and 15, the resort will host the Rahlves' Banzai Tour at Sugar Bowl with a race down the famed Silver Belt Gully as part of the resort's 75th anniversary.

— By Brian E. Clark ■

## SAFETY for the slopes

### New studies on slope safety

*Ski and Boarding injuries decreased in last 40 years.*

*excerpted from saminfo.com*

Three new safety-related studies commissioned by the National Ski Areas Association (NSAA) suggest that

- Terrain parks have not led to an increase in catastrophic injuries
- Ski and snowboard injuries overall are trending downward
- Helmets reduce head injuries.



photo courtesy Park City, UT

In the three studies, based on data supplied by NSAA, trauma-related catastrophic and fatal injuries incurred by people while skiing and snowboarding were used to compute the rate of injury per million visits from 1990 to 2010.

Data from selected resorts was used to estimate the overall incident rate based on ski patrol reports of serious injuries per 1,000 days of operation at 10-year intervals for 1990, 2000, and 2010.

#### Terrain Park Injuries

Ski areas first started building terrain parks in the early 1990s, so researchers were able to compare data from a time when none of the ski areas in the study had a terrain park.

During the past 20 years, the rate of fatal and catastrophic injury and the overall incidence of any injury have not changed.

In fact, the authors say that providing

specifically designed jumping features that are tested before being opened may reduce the incidence and severity of injuries to jumpers. Segregating jumping may also reduce the incidence of individuals being struck by jumpers, the study states.

#### Snowsport Injuries Trend

In a second study, commissioned by NSAA, researchers found that skiing and snowboarding injury rates are decreasing, and the prevalence of collision incidents with fixed objects and other persons on the slope is also trending downward.

13,145 incident reports and 4,618,194 visitation days at selected ski areas over a 40-year period were examined. The skiing incident rate was 3.1 per 1,000 visits in 1980, 2.66 in 1990, 2.63 in 2000 and 2.5 for 2010.

The snowboard incident rate is a bit higher than for skiers. It has decreased by nearly 1 percentage point since 2000. There were 6.1 snowboard incidents per 1,000 visits in 2010 compared to 6.97 in 2000. There were 3.3 snowboard incidents per 1,000 visits in 1990, when snowboards first began showing up on

the slopes in significant numbers.

#### Helmets Injury Reduction

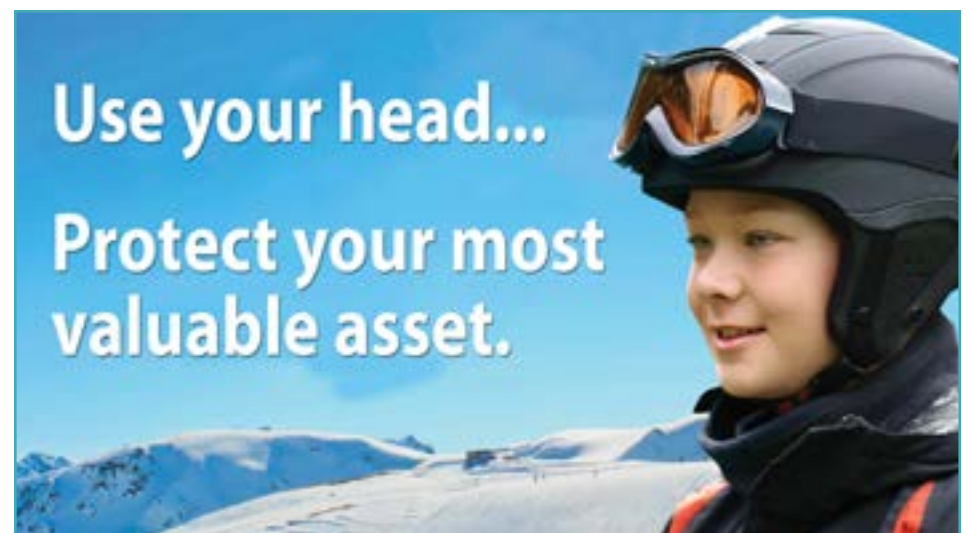
Finally, a third study shows increased helmet usage has led to a decrease in the prevalence of head injuries.

The study showed that during a period when helmet use increased from 8 percent to 84 percent, the prevalence of head injuries compared to all injuries decreased from 8.4 percent to 6.8 percent.

The prevalence of potentially serious head injuries declined from 4.2 percent to 3.0 percent during the same time period.

Further, the occurrence of serious head injuries declined from 1 in 4,200 days of skiing or snowboarding to 1 in 11,000 days of skiing or snowboarding. The incidence of any head injury declined from 1 in 8,600 days of activity to 1 in 26,000 days of activity.

Helmets offer mitigation for head injuries such as skull fractures and scalp lacerations. Increased utilization of helmets was associated with significant reductions in potentially serious head injuries. ■



riding **SAFE**

## TREE WELLS a safety hazard

*Best defense is to give tree wells a wide berth*

*submitted by Gene Fulkerson*

Tree wells typically form after a big dump of snow. Low hanging branches prevent snow from collecting around the base of an evergreen tree, creating a hollow space.

90 percent of people who fall into tree wells are totally unable to get themselves out. They are usually wedged head first underneath the snow.

I know. It happened to me. And while I wasn't in danger of suffocating, I could not get myself out of the hole. My friends stood around laughing until they realized I was in real trouble. And I was in bounds.

Roughly four people die from snow immersion suffocation in the USA every year. Many more become trapped and luckily are rescued.

If you're heading to the mountains this winter, make sure you know how to rescue yourself or a friend who is stuck in a tree well.

### *Avoiding Tree Wells*

- Carry safety equipment for off piste and tree skiing including:
  - Cell phone with resort emergency number
  - Transceiver / beacon
  - Avalung            - Compass
  - Whistle            - Shovel
  - Probe              - Recco
- Wear bright clothing that does not blend with the terrain.
- Follow proper off-piste and tree-skiing protocol by skiing with a buddy and not using your poles' wrist strap. Your poles should have "powder" baskets.
- In dense tree areas or in poor visibility, ski or ride short pitches and stop to regroup often. Stay within sight of your partner!
- Ski and ride in control.

- Give tree wells a wide berth. Look at the open spaces between trees not at the trees.

### *Falling into a Tree Well*

- As you fall grab any part of the tree and keep your head from sinking too deep into the snow.
- Yell or use a whistle to get your partners attention.
- Resist the urge to struggle, which might only bring more snow down upon you.
- Try to make a breathing space around your face. Stay calm to conserve air.
- Don't try to unclip your skis, unless you are certain you won't sink any deeper.
- Move your body in a rocking manner to create an air space for yourself. Your ability to survive depends on your ability to keep breathing.
- As long as you don't suffocate, your body will heat and compact the snow over time, giving you a better chance of being able to wiggle out.
- Trust that your ski buddies are on their way.

### *Getting a Ski Buddy Out*

- If possible, use your cell phone to call ski patrol or the resort's emergency number.
- Don't leave to get help. Stay with your ski/board buddy!
- IMMEDIATELY begin snow immersion rescue efforts.
- Go directly for the airway, and keep it clear, be careful not to knock more snow into the hole. Clear any snow from the airway and continue necessary first aid or extrication efforts

- Do not try to pull victim out the way they fell in. Instead, determine where the head is and tunnel in from the side.



photo courtesy Catherine Ohl

### *Finding a Ski Buddy*

What to do if you did not witness your partner going down but suspect they may have.

- Immediately call resort emergency number and report point last seen.
- If you can not get back to the area where you suspect your partner may be in a timely manner, go to closest lift terminal and notify patrol of your location and stay there until contacted by patrol as what to do next.
- If you do NOT have a cell phone, ask nearest guest to call resort emergency number.
- If phone service is not available and you are unable to return to your partner to help in a timely manner, proceed to nearest location to contact ski patrol or resort personnel. Remember these accidents are "time critical." ■

it's a **WRAP**

# WATER SPORTS on the Colorado River

*Needles Marina welcomes the Radar River Rats*

More photos can be found at [radarriverrats.org](http://radarriverrats.org)

**September 19—21, 2014**



*Gene cooling us off as we relax in our flotillas.*

**October 3—5, 2014**



*Gene is still going strong after more than 70+ years. Happy 75<sup>th</sup>!!!*

**October 17—19, 2014**



*Carmen enjoying her float time under the shade.*



*Been working on getting a new tarp. Carmen and Paul are trying this one.*



*Love is in the air and it's happening on Catherine's leg.*



*Gene's personal float... by Bacardi.*



*Trudy getting the most out of her early morning run.*



*Gene making a beer run. Beer anyone?*



*Mark, with Trudy & Simone, on his last trip of season before knee surgery.*

photos courtesy Catherine Ohl

it's a **WRAP**  
**BIG WHITE** early season

*Good start to the season, then it rained and then is snowed... sign of winter to come?*

This is our ninth annual December trip to Big White in hopes of catching some of that early season powder. This was probably the sketchiest start to the season I've seen in a long time. Certainly hope it's not a sign of a winter to come.

The highlight of the trip was the Big Reds at Big White. This event just gets bigger and better every year. Wines were provided by the local wineries of the Okanagan region from Kelowna to Osoyoos. Food was provided by the local restaurants of Big White.

And while the whole Big White program hadn't yet kicked all the way in, there were a few of the activities offered. There was free hot chocolate and s'mores at the skating rink at Happy Valley. There was also a night of free tubing with a big bonfire. This was so much fun that you must do it. The fireworks display was incredible and we could view it from our deck. ■



*Our favorite event at Big White is the Big Reds. Oh, what a night.*



*Big White celebrates their 51st year with cake in the Village Center.*



*Fresh snow again. Got to love it.*



*Fresh snow again. Got to love it.*



*View of Telus Park from above early in the morning.*



*Luciano & Gene enjoying the free s'mores at the skating rink.*



*Chilling on the slopes after a great day on the slopes.*

it's a **WRAP**  
**SAN DIEGO** gala

*An Enchanting Evening in Paris at the Town and Country Resort & Convention*

San Diego Council experienced "An Evening in Paris" at the Town & Country, November 8, 2014. Most everyone showed up in their dressiest Parisienne finery. We had cocktails, a delicious sit down dinner with dessert followed by some snow dancing to the beats provided by "Sky Mobile Music."

Barbara Blase and Chris Gill put together a fantastic event.

It was great seeing everyone and sharing plans for the upcoming snow season. Top on everyone's list was Vail Resorts, Aspen/Snowmass, Mammoth Mountain and Telluride Ski Resort.

One of the main reasons for the evening is to recognize those who do so much for their club, council and Far West.

**Jerry Stokely**, San Diego Ski Club, and **Debbie Schroeder**, Torrey Pines, were honored as their Council's Man and Woman of the Year. **Laura Meldrum**, Torrey Pines, was awarded the annual Joe Harris Award. ■



*Our gracious hosts and event planners— Chris & Barbara*



*New York meets Paris, France— Gene & Barbara.*



*Everyone loves Helen. So glad to visit with her. She's 92 and going strong.*



*San Diego's Man & Woman of the Year—Jerry Stokely & Debbie Schroeder.*



*Ryan Dohnal of Vail Resorts joined in the festivities.*



*Air guitars and Jean— Dennis and Mike on guitar.*



*San Diego's Joe Harris award was given to Laura Meldrum by Cheryl.*

# TRIPPING giving back

Here are just a few ways to ski or board for a very good cause.

**HIGHFIVES**  
NON-PROFIT ORGANIZATION

**SATURDAY  
FEB 21, 2015  
8PM TO 2AM**  
@ SQUAW VALLEY AT THE OLYMPIC HOUSE

**MUSICAL ACTS TO INCLUDE:  
ANDY FRASCO AND THE UN  
CHRIS CLOUSE W/ RYAN LUCERO  
AND MORE LOCAL ACTS**

**FOR TICKETS, VISIT:  
WWW.SQUAWVALLEYFROM.COM  
\$100 COUPLE / \$200 STAG**

**THE ANNUAL  
SQUAW VALLEY PROM**

High Fives Non-Profit Organization is a Tahoe-based 501(c)(3) non-profit organization dedicated to raising money and awareness for athletes who have suffered a life-altering injury while pursuing their dreams in the winter action sports community. Formed in 2004, the organization has helped provide the means for making goals to be met, after suffering a life-altering injury. For more information visit <http://www.highfivesfoundation.org/>

**SKI & RIDE FOR A CURE  
VERTICAL COMPETITION**

**Registration!  
Only \$30**

Funds raised through Ski/Ride registration and donations support the research and programs of the American Cancer Society (ACS).

1. Register for the Event
2. Download the TraceUp app.
3. Join the "Ski & Ride for a Cure" Group
4. Join The FWSA Group
5. Hit the slopes (approval pending up to 48 hours)
6. Make an additional donation while registering if you choose to support the mission

Skiers/Boarders may ski anywhere in North America or Canada.

**REGISTER**

[hots.kintera.org/skiridevert](http://hots.kintera.org/skiridevert)

**MOUNTAIN HIGH, CA**  
February 22, 2015 | 9 a.m. - 3 a.m.  
8 HOUR EVENT

**HOPE ON THE SLOPES**  
SKI & SNOWBOARD TO FIGHT THE FIGHT AGAINST CANCER!

**PRIZES AWARDED**  
For most vertical feet and most funds raised.

Each team or individual will receive a commemorative **FUNDRAISING WEB SITE!**

**FEATURES TO TRACK**  
vertical feet and distance.

**PROCEEDS BENEFIT THE AMERICAN CANCER SOCIETY.**

**mountain high**

THE OFFICIAL SPONSOR OF BIRTHDAY!

FOR MORE INFORMATION OR TO REGISTER, PLEASE VISIT [WWW.MOUNTAINHIGH.COM](http://WWW.MOUNTAINHIGH.COM)  
©2015 American Cancer Society. All rights reserved. Offer valid through 2/22/15.

SKI or RIDE to Make a Difference!  
**Squaw Valley**  
March 14, 2015

Join in Fun! (11943-2015)  
Number, Can Do MS!

Vertical Express for Can Do MS is returning to Squaw Valley! This is a fun, one-day mountain event for skiers, boarders, and bikers of all abilities and ages that benefits Can Do Adaptive Skiing, a national nonprofit (501)(c)(3) organization providing a wide range of recreational activities and programs for people with MS and their loved ones.

The US Ski Resort will host Vertical Express events in 2015. The entire fee raised over \$10,000 will go to Can Do MS.

As soon as you register as a fundraising participant, you'll get a t-shirt. This will give you a gift card for \$100 off the purchase of a brand new set of ski or snowboard binding sets, along with shipping. One of your loved ones will also get a t-shirt. Thanks to our generous donors, the participants who fundraise will receive a t-shirt for a total of about \$200 worth.

Register at [hots.kintera.org/skiridevert](http://hots.kintera.org/skiridevert)

**VERTICAL EXPRESS**  
SKI OR RIDE TO MAKE A DIFFERENCE

United States Adaptive Recreation Center

**USARC SKIATHON**  
3.7.2015

SKI or RIDE to support USARC  
**Bear Mountain Resort**  
Sat., March 7, 2015

Ski or Board as much as you can in one day while supporting the USARC and its programs.

**Individuals and Teams Welcome.**

- Open Registration: 3-10 Individuals or 1000 Teams of Four
- Closed Registration: 3-100 Individuals or 3000 Teams of Four

**Participants receive**

- Full day ticket to Bear Mountain with free-skiing privileges!
- 100% custom Bearskin Park
- Sunscreen
- Water
- Apple cider, coffee, refreshments, beer, discounts, coffee, hot chocolate, granola and other amenities.

**Sponsors receive**

- Tax Deduction

**The Winners**

The first winners of the Skiathon are thousands of disabled children and adults who discover their potential through special events created by the generosity of their passionate and grateful supporters.

**Register**  
[hots.kintera.org/skiridevert](http://hots.kintera.org/skiridevert)



**TRIPPING** around  
**TRIPS & ACTIVITIES** on tap

Details and flyers can be found under **TRIPS** at [PacificRimAlliance.org](http://PacificRimAlliance.org)



**Save the Date**

**\$100\***

Join PaC Rim for our 15<sup>th</sup> Annual  
**Wine Maker Dinner**  
Fundraiser for MS

Saturday, **October 3, 2015, 5 PM**  
10818 Viacha Dr., San Diego, CA

**100% of proceeds to benefit**

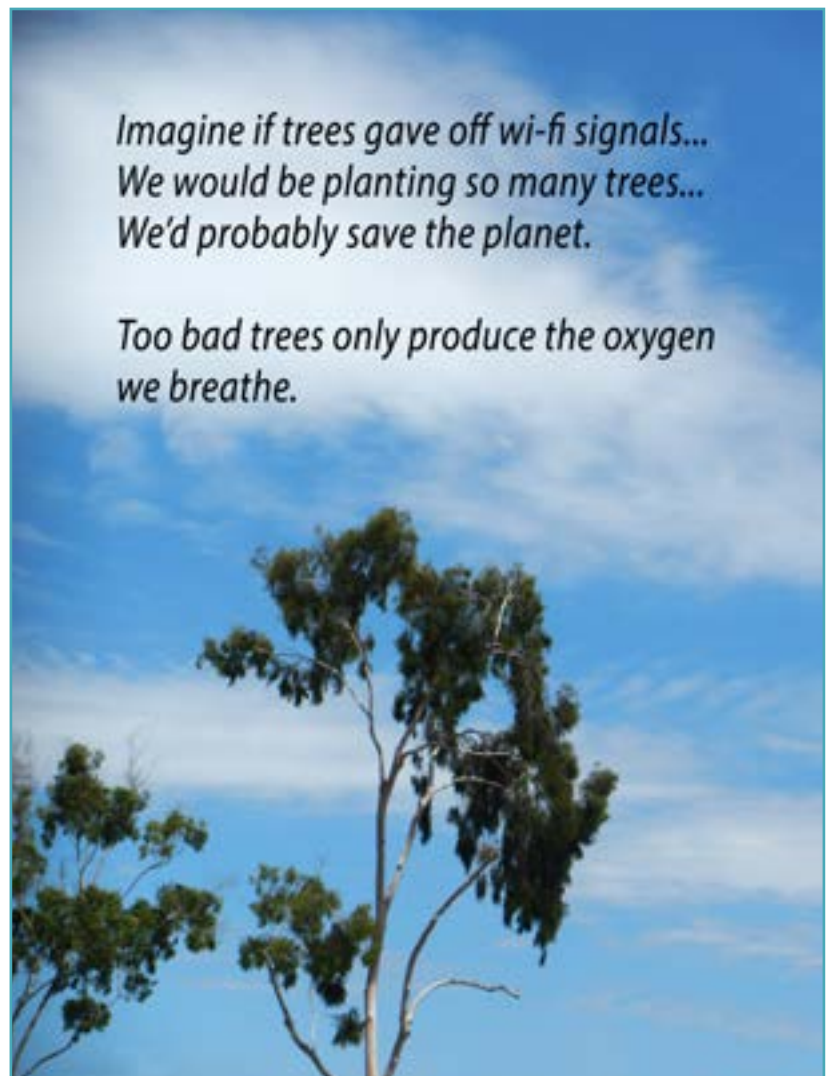


**Can Do MS** formerly Heuga Center for MS  
IRS 501(c)(3) Number 74-2337853  
www.mscondo.org • 970.926.1290



July 25 — August 2, 2015  
[www.LA2015.org](http://www.LA2015.org)

**Together We Thrive**

*Imagine if trees gave off wi-fi signals...  
We would be planting so many trees...  
We'd probably save the planet.*

*Too bad trees only produce the oxygen  
we breathe.*



**Get Up Here**  
and join us to celebrate the 100th anniversary of Steamboat Hill, the oldest ski hill in America, and to honor the legends of skiing.

**Skiing History Week 2015**  
April 8-12, 2015 in Steamboat Springs, Colorado

Highlighted events include:

- U.S. Ski and Snowboard Hall of Fame induction ceremony at the Steamboat Grand
- "Skiing in Steamboat" exhibition opening
- The Steamboat Ski Museum, "Ski USA" and Impact Center event
- Gold Medal 1911 awards for the greatest ski athletes from the past 100 years

**Steamboat**  
Enjoy a week of skiing and fun in Steamboat, the Town USA!

Incredible rates for all equipment starting April 8 & all-inclusive ski packages available.

Experience Steamboat's Challenge "Pond" Series  
Experience the thrill of a 100-foot high jump in the heart of the town.

Register at [www.skihill.org](http://www.skihill.org)  
Questions 970.855.8121

2015 Skiing History Week to be held in Steamboat, CO, April 8–12, 2015.

## TRIPPING san diego

Tripping around... membership has its benefits.

Click on any image to download a pdf flyer.

### Hiking the Ho Chi Minh Trail

I love to hike and am looking for folks to go hiking with. I like exploring new venues and tend to prefer intermediate to difficult trails but I am open to anything. I recently learned about San Diego's Ho Chi Minh Trail.

San Diego's own Ho Chi Minh trail got its name in the 60s from UCSD surfers

who would take the trail to the beach, infamously naming it after the Ho Chi Minh Trail in Vietnam. The trail leads close to Black's Beach, so I'm told.

Be prepared for a mini adventure that is not for the faint at heart. This trail is completely made of sandstone after all, which can crumble at any moment. It is never safe to explore this trail after a rainfall as the sandstone becomes far

weaker and is more likely to come apart.

You can look forward to crawling down sand steps, walking across a plank and climbing down a rope to get to the beach. Are you ready? Contact Gene Fulkerson at [gene@pacifcrimalliance.org](mailto:gene@pacifcrimalliance.org) or 858-467-9469.

Trail Distance: 2.4; miles Difficulty: 7.5; Scenery: 8.5



## Bike & Barge Italy

Mantova to Venice  
April 4-11, 2015

Enjoy cycling the countryside... Experience Venice, Mantova and Ferrara—the Jewels of the Italian Renaissance

### Basic Trip Price \$1,600 Includes

- 8 Days / 7 Nights Lodging aboard the Ave Maria Barge
- 4 Day Tours
- Breakfast, Lunch, Dinner (beverages not included)
- Midweek Maid Service
- Bed & Bath Linens
- Coffee & Tea Onboard
- Free Wi-fi Onboard
- Afternoon Snack
- 27 Gear Unisex Bikes
- Bike Tour with Bike Leader
- Bike Repair Kit
- Saddle Bags and Front Bag
- Maps and Guide Book
- Visit to Cheese Factory
- Transfer from Ferrara-Adria
- Pre, Post & Arrival Parties
- All Port Taxes & Fees

### Extras

- Single Supplement + \$420
- Superior Cabin + \$280
- Electric Bike + \$200 per week or + \$30 per day
- Air NOT Included
- Tips NOT Included
- Trip Insurance Recommended
- Post Trip to Cinque Terre (TBA)



### Ave Maria

Relax in the comfort of an elegant private barge while enjoying the luxurious services you would expect from a premier hotel. Enjoy authentic regional cuisine and wine.

A bit of sailing, then off on a walking or cycling tour to discover the natural and cultural wonders of Italy. The floating hotel follows the bike tour, cruising along the Po River.

<http://www.ave-maria-boat.com/en>

### Payment

- \$100 Down now
- \$500 by Sept 1, 2014
- \$500 by Nov 1, 2014
- \$500 by Jan 1, 2015

### Cancellation

- \$100 after Sept 1, 2014
- \$500 after Dec 1, 2014
- Total after Feb 1, 2015

Waiver/Release of Liability Required  
CST 2083329-40

### Information & Reservations...

Eileen Sanford  
858-695-1442 [h] or 858-761-6192 [c]  
[eileensanford12@gmail.com](mailto:eileensanford12@gmail.com)

Make checks payable SDCSC. Mail to Eileen Sanford, 11760 Caminito Prenticia, San Diego, CA 92131

Call NOW to take advantage of the promotion as priced below\*— offer expires 5/31/14



## Rhine Getaway

Cruise Amsterdam to Basel

August 21 - 28, 2015

### from \$2,431\* pp includes

- 8 Days / 7 Nights Standard E cabin (dbl. occ.)
- 6 Guided Tours in 4 Countries
- Breakfast, Lunch, Dinner
- Wine, Beer, Softdrinks with Lunch & Dinner
- Bottle Champagne in Room upon Arrival
- Free In-Room Wi-fi
- Welcome Party
- All Port Taxes & Fees
- Air NOT Included
- Tips NOT Included
- Trip Insurance Recommended

\* Trip price is AFTER the \$125 pp group discount AND the 50% promo has been deducted from the brochure price.

### extras

- French Balcony D \$3,021\* pp (dbl. occ.)
- French Balcony C \$3,331\* pp (dbl. occ.)
- Veranda B \$3,531\* pp (dbl. occ.)
- Veranda A \$3,831\* pp (dbl. occ.)
- Optional pre/post 2-night trips from \$549 pp

### payment schedule

- \$500 deposit due now
- 25% of full fare due September 1, 2014
- 25% of full fare due January 1, 2015
- 25% of full fare due April 1, 2015
- Balance due May 1, 2015

### cancellation fees

- \$100 after June 1, 2014
- \$300 after September 1, 2014
- 15% of full fare after March 1, 2015
- 30% of full fare after May 1, 2015
- 50% of full fare after June 1, 2015
- 100% of full fare after July 1, 2015

### about Rhine Getaway

Visit the highlights of the legendary Rhine River on this 8-day cruise. Explore Holland's famous windmills and waterways and take part in the inviting nightlife in Rudesheim's Drosselgasse. You will see the many charming castles that command the riverbanks as you sail through Germany. Experience the lush landscape of the Black Forest region. Visit **Wiking Cruises Rhine Getaway** at [bit.ly/1l49mU1](http://bit.ly/1l49mU1).

Waiver/Release of Liability Required  
CST 2083329-40



### information

Eileen Sanford  
[eileensanford12@gmail.com](mailto:eileensanford12@gmail.com)  
858-695-1442 [h] or 858-761-6192 [c]

reservations contact Ken Darrow, Universal Travel 858-456-7887

## TRIPPING far west

Tripping around... membership has its benefits.

Click on any image to download a pdf flyer.

**2015 Far West International Ski Week**

### Val d'Isère, France

**March 14–21, 2015**  
from \$1,995 ppdo + air

Val d'Isère and Tignes ski areas are best-known for their combined ski area called L'Espace Killy. They offer over 190 miles of skiable terrain and extensive off-piste areas. Due to their altitude they have very reliable snow.

You will find a wide range of possibilities for the experienced skier and many wide open groomed runs for the intermediate and beginning skier.

There are over 150 shops and 115 bars and restaurants to meet your off-snow desires.

### Paris, France

pre-trip

**March 10–14, 2015**  
\$850 ppdo (\$1,339 Single Supplement)

### Aix en Provence + Nice

post-trip

**March 14–21, 2015**  
from \$1,850 ppdo + air

Debbie Stewart  
[FWSAIntTrvl@prodigy.net](mailto:FWSAIntTrvl@prodigy.net) • 559-737-0882 (c)

### 2015 Heli-Skiing Trip

Join a Far West Heli-Skiing Trip  
**March 16–21, 2015**

**Signature Skiing 5-day trip to Revelstoke, BC**

**Price:** \$5,830 (with acc.—taxes not included) \$6,480 (single occ.—taxes not included)

**Includes:**

- All meals, snacks, and non-alcoholic beverages
- All lodge accommodations and use of lodge facilities such as saunas, hot tubs, etc. (lodging located in town of Revelstoke)
- Use of specially designed heli-ski and poles
- Use of radio/shovel/probe/guessed pack
- Training in and use of avalanche transceivers
- Provides 71,000 feet of skiing of which 49,700 feet guaranteed

**Schedule:**

- Mar. 15, 2015—Fly to Kelowna, BC and stay overnight (not included in price)
- Mar. 16—CMH Bus takes you to Revelstoke—ski that afternoon (participants may drive directly to Revelstoke—must arrive in time for afternoon ski)
- Mar. 17–20—Full days of skiing
- Mar. 21—CMH bus takes you back to Kelowna in the morning and you return home

\$500 non-refundable deposit due when you reserve your spot

Sign up directly with Julie Noble, [jnoblecmh@msn.com](mailto:jnoblecmh@msn.com)  
(503) 841-8662

Request trip # 15-RE135 March 16-21, 2015  
and identify yourself as a member of Far West Ski Association

Spaces go quickly—first come first served—don't miss out!

For more information contact:  
Nancy Ellis, VP North American Travel  
Far West Ski Association  
[nancy@nwtravel.com](mailto:nancy@nwtravel.com)  
530 414 8261 (cell) 530 582 0566 (home)

Must be a member of a Far West Ski Association affiliated club or FWSA Direct Member

## WHITEFISH MOUNTAIN RESORT

EST. 1947

The Location of  
**Far West Ski Association's**  
2015 Mini Ski Trip  
March 30th to April 4th, 2015

Adult package prices will range from \$380 to \$600  
Price does NOT include air

"The Voice of the Western Skier"

**Included:**

- Airport Transfers
- 3 or 4 Day Lift Tickets
- Transfers to Ski Resort
- Welcome Party
- Farewell Party

**More Options:**

- Snowmobile Tours
- Sawtooth Nature Center
- Day Spa
- Cluster Park Tours
- Dog sled Adventures
- Sleigh Ride

Whitefish Mountain Resort is located at The Big Mountain in North-western Montana, located west of Glacier National Park in the Flathead National Forest. FWSA Lodging will be at Grouse Mountain Lodge where you will enjoy an authentic Montana experience.

This trip is limited to 100 participants  
Contact Gloria Ramirez  
661-829-5996 or 661-800-8220  
[garnk2011@gmail.com](mailto:garnk2011@gmail.com)

Must be a Member of a Far West Ski Association affiliated club or a FWSA Direct Member

Grouse Mountain Lodge  
FWSA CST #2034983-40

## FAR WEST SKI ASSOCIATION

Mississippi River Boat Cruise—June 19–25, 2015

Adult Package Prices  
**\$ 1,775—\$ 3,058**

Air and Ground Transportation not included

Enjoy a 4-day roundtrip paddleboat cruise aboard the American Queen from New Orleans. A "Southern Culture Cruise" with stops at Oak Alley Plantation and Baton Rouge, LA, capital of LA. Two nights in New Orleans after the cruise with a Farewell Party and optional tours.

**Contact:**  
Nancy Ellis, VP North American Travel  
P.O. Box 9681, Truckee, CA 96162  
530-414-8261 (cell)  
Email: [nawtravelnancy@stcglobal.net](mailto:nawtravelnancy@stcglobal.net)

Must be a member of an affiliated club or a Direct Member

Optional Activities in New Orleans:

- Beach/Paradeboat Tours
- Shrimp Paradeboat Tours

# SPRING FLING

## \$720 per person

Special pricing for Far West Clubs & Members



APRIL 4-11, 2015

# Big White

B C C A N A D A

### Basic Trip Includes—

- **Welcome Reception**
- **7 Nights Lodging** (dbl. occ.)  
At the White Crystal Inn in a Superior Kitchenette room with 2 queen beds, fireplace and kitchenette. Inn is in the Village with easy ski-in/ski-out access.
- **7-Day Lift Ticket**
- **Wine Tasting Après Event**  
Taste the local wines of the Okanagan Valley.
- **Customize Your Week**  
We can get up your trip for 5, 6 or 7 nights. It's about \$100 a night per person (double occupancy)
- **Champagne Powder**  
Big White has typically has amazing spring skiing conditions and is just to even more powder storms. Don't expect to ski in shorts.

### Extras—

- **Equipment Rentals**  
Big White will offer all group members a special rate on rental equipment.
  - **Master Monday**  
A popular event for those 50+, which includes a 2 hour group lesson at any level from complete beginner to expert skier, followed by a fantastic gourmet lunch prepared by the amazing chef at the Kettle Valley Steakhouse.  
Cost: \$59\* pp plus tax
  - **Dinner & Sleigh Ride**  
Admire Big White's pristine beauty as the majestic Clydesdale horses guide the sleigh through snow covered forest to a cozy cabin in the woods.  
Cost: \$65\* pp plus tax
- \* 2015 prices subject to change

### Air—

- **Big White can assist you with booking air.**  
Lots of reasonably priced non-stop flights available from various airports. United, West Jet, Air Canada/Jazz and Alaska/Horizon fly into Kelowna from most Western US Cities.

### Airport shuttle—

- **\$85 per person**  
Round trip shuttle from the Kelowna International Airport to Big White.

### Contact—

- **Gene Fulkerson**  
858-467-9469  
[gene@pacificrimalliance.org](mailto:gene@pacificrimalliance.org)

Pacific Rim Alliance invites you to...

29

# Cabo San Jose, Mexico April 23 – May 3, 2015

Choose your dates & length of stay

**NEW DATES**

## Royal Solaris

### ● The All-Inclusive Basics

- Spacious Hotel Room with Stocked Mini-Bar
- Choice of King or 2 Queens
- Unlimited Meals, Alcohol, Soft Drinks
- Five Restaurants & Four Bars
- Two Swimming Pools and Two Jacuzzis
- Steam Room and Fitness Center
- Weekly Activity Programs
  - Beach & Pool Volleyball, Aqua Aerobics, Water Games, Dancing Lessons, Yoga
- Dinner Shows and Theme Nights
  - Mexican, Latin, Cinema Solaris, Evolution of Dance
- Live Music in the Lobby Bar most nights
- Scuba Diving Demo at the Diving Pool
- Taxes & Tips

### ● Member Benefits Include

- Round Trip Transportation from Airport
- Ocean View Room
- Robe & Slippers
- Free Wi-Fi
- Member Gourmet Breakfast
- Premium Bar & Members Only Lounge
- Premium Dinner Menu & Advance Reservations
- Reserved Seating at Dinner Shows
- Caribbean Night with Brazilian Dancers & Fire Show
- Excursion (1 free for 6-day+ stay) choice of
  - Snorkeling, Camel Ride on Beach, Ziplining

### ● Pricing [double occupancy]

**\$81\* per Person per Night** (pppn)

- Includes Basics and Member Benefits

**\$504 for 2 Persons for 4 Nights** (\$63 pppn)

- Includes Basics and Member Benefits
- **Must attend a 90-min [low-key] time-share presentation**
- Can add Nights for \$81\* per Person per Night

\* Price increases to \$92 pppn after January 20, 2015

### ● Extras Available (\$)

- Room Service
- Business Center
- Spa, Beauty Salon and Shops
- Shuttle Service to Cabo San Lucas
- Tours Operated by Outside Company On Site offers Zipline, Fishing, ATV, Diving, Swim with Dolphins

### ● The Fine Print

- Can use Credit Card to Pay [no additional charge]
- Entertainment/Programs subject to change
- Solaris is a time-share and you will be asked if you want to attend a presentation. In our experience, if you say no they will leave you alone.
- Royal Solaris is located in Cabo San Jose, only 15 minutes from the San Jose International Airport (SJD) and just 20 minutes from Cabo San Lucas.
- Trip Insurance is recommended.

Information & Reservations... Catherine Ohl at [ohl@acatmeowz.com](mailto:ohl@acatmeowz.com) or 858-405-0637

# radar **RIVER** rats

colorado **RIVER** skiing/boarding  
needles **MARINA**



You must be a current member of the Radar River Rats and sign a Liability Release to participate in our water ski/board events.

**\$145\*\***



photo courtesy Catherine Ohl

## & water **SKIING** wake **BOARDING** at its very best!

### 2015 Colorado River **SCHEDULE**

June 19-21

July 10-12

Aug 7-9

Sept 11-13

Oct 9-11

July 24-26

Aug 21-23

Sept 25-27

Oct 23-25

*Everyone Welcome*

**Friends • Family • Beginner • Expert**

Please note: Our skis and wake boards are best suited for Beginners to Intermediates. We suggest if you require more advanced equipment that you rent them from your local sporting goods store.

### Trip Includes—

- 1 Full & 1 Half Day Skiing/Boarding
- Equipment & Instruction
- Waterfront Camping
- 5 Meals— 3 on Saturday & 2 on Sunday
- Saturday Happy Hour
- Beer, Wine & Soda on Saturday & Sunday

### What's Available!—

- Location— **Needles Marina**
- Pool, Showers & Rental Cabins available
- 6 PM Check-in. 5 PM Check-out on Sunday
- Option to add Friday Skiing/Boarding

### Prices—

\$145 \*\* Skier / Boarder

\$75 Non-Skier \*

\$35 Child age 6-12 \*

Free Child 5 and under\*



### Must be a member of Radar River Rats—

\* May not ride in the club boat during club hours.

\*\* Subject to fuel surcharge if gas is more than \$5/gal

### For Trip Information—

Visit [www.RadarRiverRats.org](http://www.RadarRiverRats.org)

Call Patricia at 323-651-0686 (before 9 PM)

### Boat Drivers—

Call Gene at 858-467-9469 (before 9 PM)

2015

83rd Annual Convention

Far West Ski Association

Salute to San Diego



"The Voice of the Western Skier"



June 4-7, 2015

Town and Country Resort & Convention Center

500 Hotel Circle North, San Diego, CA 92108

800-772-8527 • www.towncountry.com

Hosted by San Diego Council of Ski Clubs



### Town and Country Resort & Convention Center

Reservations call 800-772-8527

Group Name Far West Ski Association

Online Reservations <http://bit.ly/FWSA-lodging>

Room Rates per night plus tax single or double occupancy

(choice of Royal Palm Tower, Regency Tower/Courtyard, Garden Room)

Garden & Tower Rooms **\$145** (Rooms will be released May 15, 2015)

### Hotel Features

- 32 lushly-landscaped acres in the heart of Mission Valley, 5 restaurants & 3 lounges, 3 Pools and Whirlpool, 14,000 sq. ft. Bella Tosca Day Spa-Salon-Fitness Center, 27-hole Championship Golf Course, adjacent to Fashion Valley Shopping Mall & Light Rail Trolley Stop
- NO Resort Fees; FREE Wi-Fi in Guest Rooms
- Parking is \$5 per day
- Rates are available 3 days pre and post Convention



### Transportation

- Air transportation is via San Diego International Airport (SAN), located 7 miles from the Town & Country.
- Rental cars and shuttle services are available at the airport.
- **The Cloud 9 Super Shuttle** is currently available.

### Convention Highlights

- Silent Auction
- Travel Expo
- Snowsports Leadership Academy
- Celebrity Speakers
- Public Affairs Panel
- Saturday Awards Luncheon
- Celebrity Multi-Media Presentation
- Saturday Awards Dinner
- Far West General Meeting & Elections

### Optional Activities

- Thursday Activities
  - Old Town Trolley Tour of San Diego
  - San Diego Harbor Seal Tours
  - Sunset Dine Out aboard USS Midway
- Friday Activities
  - Michael German Memorial Golf Tournament
  - San Diego Zoo
  - La Jolla Cove Kayak Tour
  - Mission Bay Bike Tours
  - Pool Party

#### Jane Wyckoff

FWSA Convention Chairperson

[jane@wyckofftravel.com](mailto:jane@wyckofftravel.com) or 949-933-9607

#### Jeannine Davis

Silent Auction / Travel Expo Chairperson

[SilentAuction@fwsa.org](mailto:SilentAuction@fwsa.org) or 415-328-2333

#### Eileen Sanford

San Diego Host Council Convention Coordinator

[HostConvention2015@fwsa.org](mailto:HostConvention2015@fwsa.org) or 858-695-1442



# pacific rim SIGN-UP FORM

Trip/Event: \_\_\_\_\_ Trip/Event Dates: \_\_\_\_\_

If you don't have a roommate yet, just fill in the information for Participant 1. If you have more than one roommate, fill out the appropriate number of forms. Single Supplement is usually available upon request. Download Liability [Form](#).

Description	Participant 1	Participant 2 (Roommate)
EXACT Name on Passport		
Street Address		
City, State, Zip		
Email		
Cell Phone		
Home Phone		
Date of Birth [MM/DD/YEAR]		
Passport Number		
COUNTRY Passport Issued		
Date Passport ISSUED		
Date Passport EXPIRES		
BED Configuration (Specify "2 beds" or "matrimonial")		
Cost — Basic Trip (PP)		
Cost — Extension (PP)		
Single Supplement (Call for price)		
Membership (\$8 single/\$10 family)		
[Less] Deposit		
Final Payment		
<b>Departure</b> Airport, Date & Time		
<b>Departure</b> Airline & Flight #		
<b>Return</b> Airport, Date & Time		
<b>Return</b> Airline & Flight #		
Special Requests		

Send form(s) with your payment to Pacific Rim Alliance, 10818 Viacha Dr., San Diego, CA 92124. To expedite the process, email this completed Trip Form to [gene@pacificrimalliance.org](mailto:gene@pacificrimalliance.org). For information contact [Gene Fulkerson](#) or call 858-467-9469.

### Pacific Rim Alliance Photography Policy:

By attending a Pacific Rim Alliance Event (the "Event"), you consent to being filmed and or photographed, whereas your image, voice, and likeness may be used by Pacific Rim Alliance for promotional purposes. Any photograph taken at the Event, whether in digital or analog format, is subject to mandatory, non-exclusive license to the Pacific Rim Alliance for use in Event promotional purposes.





# Membership Application

ALL Pacific Rim Alliance attendees must be a member to participate in one of our trips. Our membership year is from July 1, 2014 through June 30, 2015.

To join the Pacific Rim Alliance, fill out the following, Sign your release of liability and send with your check [payable to Pacific Rim Alliance] to:

**Pacific Rim Alliance**  
10818 Viacha Dr., San Diego, CA 92124

Name [1]: \_\_\_\_\_ Name [2]: \_\_\_\_\_

Home Addr: \_\_\_\_\_

City: \_\_\_\_\_ State: \_\_\_\_\_ Zip: \_\_\_\_\_

E-Mail Addr [1]: \_\_\_\_\_

E-Mail Addr [2]: \_\_\_\_\_

Cell [1]: \_\_\_\_\_ Cell [2]: \_\_\_\_\_

Home: \_\_\_\_\_ Work [1]: \_\_\_\_\_

Birthday [1]: \_\_\_\_\_ Birthday [2]: \_\_\_\_\_

Indicate Membership  
[Includes membership in FWSA, LA & San Diego Councils, NSAA]

- \$8 INDIVIDUAL Membership
- \$10 FAMILY Membership—Significant other, spouse, children, friends residing at same residence qualify.

Photographs of members participating in club activities are routinely included in a newsletter or on our web site or facebook which is distributed to the membership and other interested parties and is made available to the general public. Signature is required below to agree to this and to the terms of the Release of Liability to the right.

\_\_\_\_\_  
Signature [1] Date

\_\_\_\_\_  
Signature [2] Date

## Release Of Liability, Waiver Of Claims, Express Assumption of Risk and Indemnity Agreement

WAIVER: I am aware that participation in the Pacific Rim Alliance events has, in addition to the usual risks, dangers and hazards associated with travel, snowboarding, alpine, Nordic, Heli & off-piste skiing, certain additional risks, dangers and hazards including, but not limited to: boarding, riding and disembarking ski lifts; changing weather conditions; exposed or hidden natural or man-made objects; avalanches; failure to ski or ride safely or within one's own ability; and negligence on the part of other skiers and boarders, the organization or their staff.

I freely accept and fully assume all such risks and danger and the possibility of personal injury, disability, death, loss or damage to person or property that may occur as a result of my engaging in the above activities.

I HEREBY RELEASE AND HOLD HARMLESS [releases Pacific Rim Alliance] WITH RESPECT TO ANY AND ALL INJURY, DISABILITY, DEATH, or loss or damage to person or property, WHETHER CAUSED BY NEGLIGENCE OR OTHERWISE.

I hereby release the releasees, their officers, directors, employees, representatives, agents, and volunteers from liability and responsibility whatsoever and for any claims or causes of action that I, my estate, heirs, survivors, executors, or assigns may have for personal injury, property damage, or wrongful death arising from the above activities whether caused by active or passive negligence of the releasees or otherwise.

## MEMBERSHIP has its BENEFITS

The **Far West Ski Association** has an impressive collection of member benefits including trips, lodging, lift ticket and more. Check out the member benefits at [fwsa.org](http://fwsa.org).

The **National Ski Council Federation**

has also discount benefits for club members which includes lodging, lift tickets, ski rental and so much more.

Check out [www.skifederation.org](http://www.skifederation.org) for the complete list of benefits. Go to the "Members Only" area and input the following:

User Name: **skiclub**  
Password: **member**

The bearer of this card is a member of the Far West Ski Association and entitled to all the benefits associated with membership in FWSA. This card is non-transferable. Photo ID may be required. Expires 9/30/15.

## COMMUNITY center giving BACK ...so easy to do.



### Can Do MS

Everything done at Can Do MS is driven by one simple belief: you are more than your MS. Can Do MS is the start of a whole new way of thinking about and living with multiple sclerosis. For more than 30 years Can Do MS has been empowering people with MS with research, webinars and other programs.

Our next fund raiser for MS will be our annual wine dinner on **Oct. 3, 2015**. For more information contact

Gene Fulkerson  
gene@pacifricrimalliance.org  
858-467-9469

### Can Do MS

[formerly the Heuga Center for MS]  
IRS 501(c)(3) Number 74-2337853  
[www.mscondo.org](http://www.mscondo.org) • 970.926.1290

### Hope on the Slopes

**Ski & Ride For A Cure** has partnered with the American Cancer Society to manage events and collect donations to support programs, research and services.

The Ski & Ride for a Cure is a vertical tracking event. Participants register for the event, download the TraceUp app

and then ride! This is a season-long vertical tracking event for skiers and boarders. You can ski/board and track vertical anywhere worldwide. The participant(s) with the most vertical attained during the 2014/2015 season will be eligible for prizes.

For more information on this event, click [hots.kintera.org/SkiRideVert](http://hots.kintera.org/SkiRideVert).



### Recycle Program

Pacific Rim recycles cans, bottles and glass at all our events. Each quarter we donate the proceeds to a charity. This past quarter's donation went to **Toys for Tots**.

Every kid deserves a little joy. Visit <http://www.toysfortots.org/donate/Default.aspx> to make a credit card donation or visit their website to find the nearest toy drop off location.

**amazon smile**  
You shop. Amazon gives.

AmazonSmile is a simple and automatic way for you to support your favorite charitable organization every time you shop, at no cost. For more information, to sign up & shop visit— [smile.amazon.com/](http://smile.amazon.com/).

### The Unrecables

{re}Register Ralphs Card [each Sept]

**The Unrecables Ski Club** is a non-profit, volunteer-based organization, serving the recreational needs of people with disabilities. They promote adaptive sports, and encourage people with disabilities to participate in sports, recreational, and social activities in their

communities. The club is a member of the LA Council of Ski Clubs.

Log in to [www.ralphs.com](http://www.ralphs.com). Click on **Community Contribution**. Click on **Participant**. Follow the easy steps to enroll. **Their NPO# is 80831**. Be sure to complete all information.

To volunteer visit [unrecables.org](http://unrecables.org) or email [info@unrecables.org](mailto:info@unrecables.org).

A CHAPTER OF  
**DISABLED SPORTS USA**  
If I can do this, I can do anything!"

## the FINE PRINT

*Skiing is a Dance in which the Mountain always Leads.*

### About Pacific Rim

Pacific Rim Alliance is all about skiing. We were formed with the express notion of skiing the world and never having to attend a meeting.

Originally we concentrated on skiing exotic resorts in Europe, South America and New Zealand. These have been scaled back due to the weak economy. While many of us are now retired we are looking at locations that fit the quote that "we have more time than money."

We have gotten into the groove of running early and late season ski weeks to Big White Ski Resorts in Canada. These trips run about \$700 per person and include hotel lodging (double



### Official Documents

We are a 503(c)7 not-for-profit corporation founded in 1997 and incorporated in the state of Nevada. We file a Form 990 yearly.

A current copy of our Bylaws and Articles of Incorporation can be found via the "[About US](#)" link on most pages of our web site.

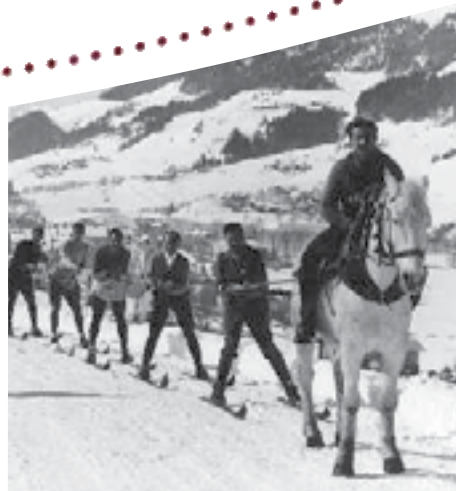
Liability waivers are required for membership on all trips and events. Trip waivers can be downloaded from our [website](#).

occupancy), 6-day lift ticket, ground transfer from/to the Kelowna airport and various parties. We believe that Big White offers the best and most consistent early and late snow.

We do not offer Mammoth trips since there are so many ski clubs in both the Los Angeles and San Diego Councils that offer quality affordable bus trips to Mammoth. Just ask and we'll direct you.

We believe in giving back to our ski community.

- ◆ Our major fund raiser is our annual wine maker dinner for Can DO MS. To date we have raised more than \$36,000.



### ski History

We have a relatively young history as a ski club. Most of our history can be found in our past newsletters and photo galleries cataloged since our beginning.

We also have a collection of history of ski clubs, councils, the Far West Ski Association and ski resorts in the west. It is a work in progress updated regularly by our Club historian. If you have any history you would like to share, contact **Catherine Ohl** at [ohl@catmeowz.com](mailto:ohl@catmeowz.com). Visit our [website](#) to learn more.

- ◆ We encourage members to participate in other on-snow fund raisers for so many good causes— Hope on the Slopes (for cancer), Ski to Defeat ALS, USARC Ski-a-thon and Peak to Peak Pedal (for adaptive skiers) and the Jimmie Heuga Vertical Express for MS.

- ◆ We also support junior racers (through the Far West Ski Foundation), Women's Ski Jumpers USA, Wounded Warriors, The Unrecables and others.



### Learn-to-Ski Programs

We encourage our members to participate in the National Bring-A-Friend challenge (<http://www.bringafriend.org/>) annually in January.

There are some incredible deals for first time skiers. It's a great way to get your friends safely on the slopes.

Another significant program is National Ski Safety Month ([www.nsa.org/safety-programs/national-safety-month/](http://www.nsa.org/safety-programs/national-safety-month/)) held annually in January.



*Use your brain, it's the most important part of your equipment.*

~Kevin Andrews and Warren Miller, Extreme Skiing

Ski with Pride • Watch all Sides • Let it Ride • First with Safety Awareness



## Contact Information

Board of Directors

about **Pacific Rim Alliance Snow Sports Club**

**Catherine Ohl**, President,  
Historian, Web Master, Editor

[ohl@acatmeowz.com](mailto:ohl@acatmeowz.com)

858.405.0637

**Gene Fulkerson**, VP Travel

[gene@PacificRimAlliance.org](mailto:gene@PacificRimAlliance.org)

858.467.9469

**Fay Mumbauer**, Director

[fay@PacificRimAlliance.org](mailto:fay@PacificRimAlliance.org)

**Patricia Ortiz**, Accounting

[patricia@PacificRimAlliance.org](mailto:patricia@PacificRimAlliance.org)

## Mission Statement

The PACIFIC RIM ALLIANCE is a non-profit organization dedicated to the appreciation of skiing, boarding, sight-seeing, photography, travel, public affairs and civic awareness. The Alliance is further oriented to the building of international relations among skiers, snowboarders and sports organizations throughout the Pacific Rim.

Surplus moneys above requirements for deposits for future trips will be donated to non-profit organizations devoted to charity, research & education. We are especially

interested in, but not limited to, supporting Ski Area Development, Climate Change, Adaptive Ski Programs, Can Do Multiple Sclerosis, Olympic & Junior Racers and Ski Museums.

The Alliance is a member of San Diego Council of Ski Clubs (SDCSC), Los Angeles Council of Ski Clubs (LAC), Far West Ski Association (FWSA), National Ski Council Federation (NSCF) and an associate member of National Ski Areas Association (NSAA). Membership in Pac Rim allows you to participate in their events and programs. ■



## Conduct Policy

This policy applies to all persons participating in a Pacific Rim Alliance Event. All participants are requested to observe common courtesy and generally accepted standards of social and moral behavior.

- ◆ There is a Zero Tolerance Policy on illegal drug use at any sponsored event or trip.
- ◆ Alcohol is allowed in moderation and where permitted by law.
- ◆ Smoking is not permitted when with the group.
- ◆ There is a strict policy prohibiting sexual harassment and ANY harassment because of race, religion, color, national origin, ancestry, disability, medical condition, marital status, sexual orientation, age, or any other basis made unlawful by any applicable law, ordinance or regulation.
- ◆ Profanity and off-color humor is only permitted if it is not offensive to other participants.
- ◆ Parents/Legal Guardians of minor children under the age of 18 are responsible for the supervision and behavior of their children.
- ◆ Board Members will attempt to resolve problems in a mutually beneficial manner. When resolution cannot be achieved, the proper authority will be called to resolve the problem.
- ◆ Participants who violate our Conduct Policy may be excluded from future trips without reimbursement of expenses. ■



## FWSA Recognition Programs

Far West Ski Association has an extensive recognition and awards program. Pacific Rim and our members have won numerous Far West awards.

There are a variety of these programs for individuals. Submittal deadline is March 20. Details and applications can be found at <http://fwsa.org/MemberCorner/Programs/programs.html>.

- ◆ **Western Ski Heritage Awardee** wins a 5-day ski trip for two to Steamboat, CO.
- ◆ **Safety Person of the Year** wins a 5-day ski trip for two to Telluride, Colorado.
- NEW Environmental Awardee** wins a 5-day ski trip for two to Aspen/Snowmass, Colorado.

Far West sponsors are offering three great prizes that require some thought and work but yields a big reward. It's well worth the investment of time. ■