



UPdate

PacificRimAlliance.org

Official Publication

Published Bi-Annually

Volume 20 | Issue 3

Fall | 2016

Inside this Issue

Pac Rim Travel

- *Water Ski*
- *Cabo, Mexico*
- *Big White*

Snow Industry

- *Latest Lift Pass Deals*
- *What's New*
- *Disappearing Islands*

Far West

- *Travel Opportunities*



Skiing is a Dance in which the Mountain always Leads.

FALL festivities

Get a preview of winter to come!

2016 water skiing

Only three water ski trips remain. We will be staying at the Needles Marina where there is a pool, beach and some cabins for rent. We are close to town and check-out is 5 pm. [Page 22.](#)

BIKING

fridays

Don't forget about our bike rides around Mission Bay. Biking is a great way to stay in shape for skiing. Scheduled dates are on the following Fridays at 10 AM

- September 16
- October 14
- November NONE
- December 29
- January 20

WINTER deals

It's not too late to get some of the best lift ticket deals ever. While the price of some of the passes have increased this fall, most have added resorts to their quiver of benefits. [Page 10.](#)

SKI SHOWS

local

Our councils get very involved in the local ski shows. You can find out about what's new at ski resorts and with products. There's lots of prizes and a great swap. [Page 21 for San Diego and page 27 for Los Angeles.](#)

CABO, oct 25 – nov 1, 2016

We continue to return to Cabo between our water ski and snow ski season. It's a great place to unwind and relax. Lodging, food and drinks included in the package. [Page 23.](#)

BIG WHITE, april 8 – 15, 2017

Join us in April for a Spring Fling in Big White, B. C., Canada. Skiing is typically winter like, only not so cold. [Page 24.](#)

See you on the slopes. ■



Portillo's slingshot lifts or Va et Vient (French for 'come and go') were built by Poma. The runs serviced are steep avalanche chutes and lift towers are illogical. The slingshot lifts are comprised of pulleys anchored to the mountain above which pull five skiers up the slope side by side, similar to a traditional T-bar lift, skis and boards remain on the snow as the skier or rider is towed uphill... at about 25 mph.

CONDO to share

Big White Ski Resort

December 2 – 12, 2016

We have a room available in a 2-bedroom condo in Big White. Pick your dates between December 2 – 12, 2016.

Room has two queen beds and a bath. You will be sharing the living room and kitchen with us.

Condo is located in the Village Center next to the Bullet Chair along side the "Easy Street" ski run.

Lodging is available at no charge. You will be responsible for your own transportation to Big White, lift tickets and food.

Lift tickets are about \$76 USD daily (\$65 for seniors, youth or students). Shuttle service from the airport in Kelowna is about \$65.



If you are interested, contact Catherine at 858-405-0637 or ohl@acatmeowz.com. ■

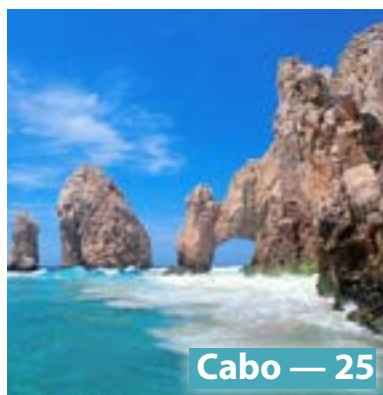
TABLE OF CONTENTS



Wine Maker Dinner for MS — 23



Big White — 26



Cabo — 25

Links...

- [Membership](#)
- [Trip Form \(pdf\)](#)
- [Liability Release \(pdf\)](#)
- [Trip Insurance](#)
- [Past Publications](#)
- [Ski History](#)
- [Photo Gallery](#)



Sustainability — 21

Interactive features of this publication include links that are activated by clicking on a logo or an underscored text. These features may not function properly on some mobile devices and in browsers. The pdf files are best viewed using a pdf reader app.

◆ **Travel & Events Tripping Calendar 4-6**

Tripping around with Pacific Rim, LA Council, San Diego Council and Far West Ski Association

Wine Maker Dinner for 2016	23
Water Sports on the Colorado River	24
Big White, Canada	2 & 26
Cabo San Jose, Mexico	25
FWSA	28 & 28
Council & Other	29-31

◆ **Features**

Member Postings	7
Safety	17
Equipment— Top 2017 Skis Reviewed	18
Fitness— Build you Powder Legs	19
Kid's Korner— Epic SchoolKids Ski Free	20

◆ **Public Affairs**

Ski Pass Deals	12
Snow Industry Bulletin	13-14
World Cup Races at Squaw Valley	15
Meet Aerialist Winter Vinecki	16
Sustainability— Global Shrinking Islands	21
Ski History— Disney's Mineral King	22

◆ **It's a Wrap**

Oceanside Beach Clean-Up	8
Water Sports on Colorado River	9
FWSA 84th Annual Convention	10-11

◆ **The Alliance**

The Alliance	2
Trip Application	32
Membership Application	33
Giving Back	34
The Fine Print: Policies	35-36
Contact Us	36

UPdate is an official publication of Pacific Rim Alliance. Articles can be reproduced when credit is given to the appropriate person(s). **UPdate** is published quarterly by Pacific Rim Alliance, 10818 Viacha Dr., San Diego, CA 92124 USA. Phone 846-9469.

Catherine Ohl, Editor Graphic Dezinznz, Design / Production

TRAVEL & EVENTS CALENDAR

TRIPPING

Details and flyers can be found under **TRIPS** at PacificRimAlliance.org



September

2016

1-16 Ireland / Scotland / Munich San Diego

Ski Council. Fun trip through Ireland and Scotland with a Munich add-on. Contact [Eileen Sanford](mailto:Eileen.Sanford@msd.org) / 858-695-1442.

9-11 Water Ski Weekend Pacific Rim Alliance & Radar River Rats.

Water ski on the Colorado River. We operate out of Needles Marina in Needles. Camping, equipment, food and drink included. Contact [Patricia Ortiz](mailto:Patricia.Ortiz@prarats.com) / 323-651-0686 before 9 PM.

11-26 England / Ireland

Far West Ski Association. Join us for a fun trip through England and Ireland. Contact [Debbie Stewart](mailto:Debbie.Stewart@fwsa.com) / 559-737-0882.

16 Bike Mission Bay Pacific Rim Alliance.

Meet in the parking lot just east of the Bahia Hotel. Contact [Gene Fulkerson](mailto:Gene.Fulkerson@prarats.com) / 858-467-9469.

17 International Clean Up Day

Check the website for a location near you. cleanupday.org.

23-25 Water Ski Weekend

Pacific Rim Alliance & Radar River Rats. Water ski on the Colorado River. We operate out of Needles Marina in Needles. Camping, equipment, food and drink included. Contact [Patricia Ortiz](mailto:Patricia.Ortiz@prarats.com) / 323-651-0686.

24-08 Fiji Diving Far West Ski Association.

Dive in the amazing coast of Fiji. Package includes lodging, meals, drinks and 10 dives. Non-dive option available. Contact [Randy Lew](mailto:Randy.Lew@fwsa.com) / 530-304-0802.



October

2016

01 Wine Make Dinner Pacific Rim Alliance.

Wine Maker Dinner for MS consists of 7 courses perfectly matched to 7 wines. 100% of proceeds to benefit Can Do MS. Our Executive Chef, Mary Trimmins, returns to dazzle us with her culinary creativity. Contact [Gene Fulkerson](mailto:Gene.Fulkerson@prarats.com) / 858-467-9469.

5-9 Peak to Peak

Ride your bike from Big Bear to Mammoth in 5 days to raise money for USARC. For information visit usarc.org.

7-9 Water Ski Weekend Pacific Rim Alliance & Radar River Rats.

Water ski on the Colorado River. We operate out of Needles Marina in Needles. Camping, equipment, food and drink included. Contact [Patricia Ortiz](mailto:Patricia.Ortiz@prarats.com) / 323-651-0686 before 9 PM.

14 Bike Mission Bay Pacific Rim Alliance.

Meet in the parking lot just east of the Bahia Hotel. Contact [Gene Fulkerson](mailto:Gene.Fulkerson@prarats.com) / 858-467-9469.

15 Walk4ALZ

Meet at Balboa Park for a short walk. Sign up / donate at bit.ly/PatsPride.

21-23 Water Ski Weekend

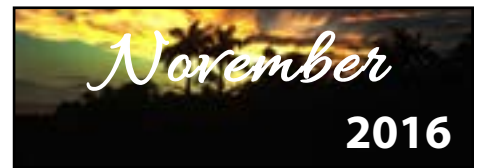
Pacific Rim Alliance & Radar River Rats. Water ski on the Colorado River. We operate out of Needles Marina in Needles. Camping, equipment, food and drink included. Contact [Patricia Ortiz](mailto:Patricia.Ortiz@prarats.com) / 323-651-0686.

22 Snow Gala Los Angeles Council.

Annual snow season kick-off dinner honoring the clubs' Men & Women of the Year. Contact [Karen James](mailto:Karen.James@lacouncil.com).

25-1 Cabo San Jose, Mexico

Pacific Rim Alliance. Enjoy warm sunny days, idyllic beaches and exciting adventures in the all-inclusive Royal Solaris. Contact [Catherine Ohl](mailto:Catherine.Ohl@prarats.com) / 858-405-0637.



November

2016

04 Winter Gala San Diego Ski Council.

Annual snow season kick-off dinner honoring the clubs' Men & Women of the Year. Contact [Barbara Blase](mailto:Barbara.Blase@sdski.org) / 858-270-0915.

11-13 Snow Jam Show

Annual snow-sports show at Del Mar Fairgrounds. snowjamshow.com/.



TRAVEL & EVENTS CALENDAR

TRIPPING

Details and flyers can be found under **TRIPS** at PacificRimAlliance.org



2-4 **Ski Dazzle Expo** Annual snowsports show at LA Convention Center. www.skidazzle.com/.

2-12 **Ski Big White** Pacific Rim Alliance. Ski the amazing early season powder at Big White. Trip package includes lodging, lift tickets and transfer from airport. Contact [Gene Fulkerson](mailto:Gene.Fulkerson@pralliance.org) / 858-467-9469.

08-14 **Ski Aspen** San Diego Council of Ski Clubs. Aspen is known for being the Rocky Mountain playground of the rich and famous, but this authentic mountain town offers far more than just glitz and glam. Contact [Mike Sanford](mailto:Mike.Sanford@pralliance.org) / 858-695-1442.

17 **Holiday Happy Hour** San Diego Ski Council. Annual snow season kick-off the winter Happy Hour at Hotel del Coronado, 4-7 PM. Contact [Barbara Blase](mailto:Barbara.Blase@pralliance.org) / 858-270-0915.

29 **Bike Mission Bay** Pacific Rim Alliance. Meet in the parking lot just east of the Bahia Hotel. Contact [Gene Fulkerson](mailto:Gene.Fulkerson@pralliance.org) / 858-467-9469.



20 **Bike Mission Bay** Pacific Rim Alliance. Meet in the parking lot just east of the Bahia Hotel. Contact [Gene Fulkerson](mailto:Gene.Fulkerson@pralliance.org) / 858-467-9469.

28-4 **Breckenridge** Far West Ski Association. Breckenridge is one of the top ski and snowboard resorts in Colorado.
• FWSA: [Nancy Ellis](mailto:Nancy.Ellis@pralliance.org) / 530-414-8261
• San Diego: [Alan Godwin](mailto:Alan.Godwin@pralliance.org) / 619-663-6626
• LA: [Sandy Blackwell](mailto:Sandy.Blackwell@pralliance.org) / 818-441-6191



17 **Bike Mission Bay** Pacific Rim Alliance. Meet in the parking lot just east of the Bahia Hotel. Contact [Gene Fulkerson](mailto:Gene.Fulkerson@pralliance.org) / 858-467-9469.

25 **Vertical Express for MS** Join us in Squaw Valley for a fun day while raising money for MS. Contact [Catherine Ohl](mailto:Catherine.Ohl@pralliance.org) / 804-0637.



12-26 **St. Anton** Far West Ski Association. Located in near Lech and Zurs, St. Anton offers some of the best skiing in Austria. Contact [Debbie Stewart](mailto:Debbie.Stewart@pralliance.org) / 559-737-0882.

21-26 **Sun Peaks** Far West Ski Association. Join us in Canada for some of the best skiing. Contact [Nancy Ellis](mailto:Nancy.Ellis@pralliance.org) / 530-414-8261.

24 **Bike Mission Bay** Pacific Rim Alliance. Meet in the parking lot just east of the Bahia Hotel. Contact [Gene Fulkerson](mailto:Gene.Fulkerson@pralliance.org) / 858-467-9469.



8-15 **Ski Big White** Pacific Rim Alliance. Ski the amazing late season powder at Big White. Trip package includes lodging, lift tickets and transfer from airport. Contact [Gene Fulkerson](mailto:Gene.Fulkerson@pralliance.org) / 858-467-9469.

21 **Bike Mission Bay** Pacific Rim Alliance. Meet in the parking lot just east of the Bahia Hotel. Contact [Gene Fulkerson](mailto:Gene.Fulkerson@pralliance.org) / 858-467-9469.

22-3 **Bike / Barge** Provence San Diego Council. Barge trip through Provence followed by a château experience in the Loire Valley. Contact [Eileen Sanford](mailto:Eileen.Sanford@pralliance.org) / 858-695-1442. **SOLD OUT**



photo courtesy Big Sky Ski Resort

TRAVEL & EVENTS CALENDAR

TRIPPING

Details and flyers can be found under **TRIPS** at PacificRimAlliance.org

in the Works...

TBA New Zealand Pacific Rim Alliance.

New Zealand is all about the outdoors, and the fun doesn't stop in winter. In fact, it gets even better, with an array of activities that you can only do when it's cold. Contact [Gene Fulkerson](mailto:Gene.Fulkerson@pacifirimalliance.org) / 858-467-9469.

TBA Bormio Pacific Rim Alliance.

In addition to modern skiing facilities, Bormio is noted for the presence of several hot springs that have been tapped to provide water to three thermal baths. Contact [Gene Fulkerson](mailto:Gene.Fulkerson@pacifirimalliance.org) / 858-467-9469.



Pac Rim Travel/Events pacifirimalliance.org

- Bike One Friday / Month [Gene Fulkerson](mailto:Gene.Fulkerson@pacifirimalliance.org)
- Water Ski June — Oct [Patricia Ortiz](mailto:Patricia.Ortiz@pacifirimalliance.org)
- Dinner for MS Oct 1, 2016 [Gene Fulkerson](mailto:Gene.Fulkerson@pacifirimalliance.org)
- **Cabo San Jose** Oct 25–Nov 1, 2016 [Catherine Ohl](mailto:Catherine.Ohl@pacifirimalliance.org)
- Big White Dec 2–12, 2016 [Catherine Ohl](mailto:Catherine.Ohl@pacifirimalliance.org)
- Big White April 8–15, 2017 [Gene Fulkerson](mailto:Gene.Fulkerson@pacifirimalliance.org)



LA Council Travel/Events lacouncil.org

- Snow Gala Oct 22, 2016 [Karen James](mailto:Karen.James@lacouncil.org)
- Ski Dazzle Dec 2–4, 2016 skidazzle.com
- Breckenridge Jan 28–Feb 4, 2017 [Sandy Blackwell](mailto:Sandy.Blackwell@lacouncil.org)



San Diego Travel/Events skisandiego.org

- Ireland Sept 1–16, 2016 [Eileen Sanford](mailto:Eileen.Sanford@skisandiego.org)
- Snow Gala Nov 4, 2016 [Barbara Blase](mailto:Barbara.Blase@skisandiego.org)
- Aspen Dec 8–14, 2016 [Mike Sanford](mailto:Mike.Sanford@skisandiego.org)
- Happy Hour Dec 17, 2106 [Hotel Del](mailto:Hotel.Del@skisandiego.org)
- Breckenridge Jan 28–Feb 4, 2017 [Alan Godwin](mailto:Alan.Godwin@skisandiego.org)
- Bike / Boat Apr 22–May 3, 2017 [Eileen Sanford](mailto:Eileen.Sanford@skisandiego.org)
- Croatia Cruise Aug 21–31, 2017 [Eileen Sanford](mailto:Eileen.Sanford@skisandiego.org)



Far West Travel/Events

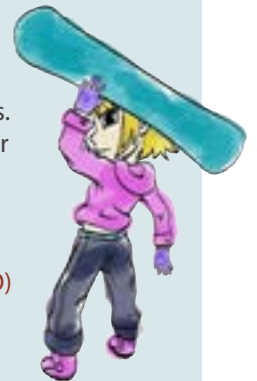
- Ireland Sept 11–26, 2016 [Debbie Stewart](mailto:Debbie.Stewart@fwsa.org)
- Fiji Sept 24–Oct 8, 2016 [Randy Lew](mailto:Randy.Lew@fwsa.org)
- Breckenridge Jan 28–Feb 4, 2017 [Nancy Ellis](mailto:Nancy.Ellis@fwsa.org)
- San Anton Mar 12–26, 2017 [Debbie Stewart](mailto:Debbie.Stewart@fwsa.org)
- Sun Peaks Mar 21–26, 2017 [Nancy Ellis](mailto:Nancy.Ellis@fwsa.org)
- Convention June 7–11, 2017 [Michael Bouton](mailto:Michael.Bouton@fwsa.org)
- Valle Nevardo Summer 2017 [Debbie Stewart](mailto:Debbie.Stewart@fwsa.org)
- Alaska Feb 25–Mar 4, 2018 [Nancy Ellis](mailto:Nancy.Ellis@fwsa.org)

wanna RACE?

If you'd like to test your skills in a race course, as a member of Pac Rim you can race in League, Council and Far West sponsored races. **More information is available at fwra.com.** Here's a list of the major races. Races are scheduled for Mammoth unless otherwise noted.

January 4–6, 2017
January 7, 2017
February 1, 2017
February 18
March 19, 2017
Mar 31 – Apr 2, 2017

Rokka Race/Ski/Board Camp
League SL Race
FWSA Ski Week (GS/SL) (Breck, CO)
League GS Race
SoCals Championships (GS/SL)
FWRA Championships (GS/SL)



Meet at 10 AM
in the parking lot
East Bahia Hotel
Mission Bay

Sept 16
Oct 14
Nov NONE
Dec 29
Jan 20
Feb 17

Mission Bay
About the Ride—

- Easy 20 miles around the bay!
- Can add 3 – 5 miles by taking the short or long way around Fiesta Island
- Bring water, helmet, sunscreen, extra tube and money for lunch
- **RSVP 858-405-0637**

ski FRIENDS

where are they now...

photos courtesy facebook



RIP Robert "Bob" Francis Miller— January 12, 1924 – August 2016

Bob passed away this past August. He was 92. I will always remember his pole dancing in Bormio... such a funny guy and young at heart. He was such a terrific guy. We heard he skied into his

90s taking full advantage of that free lift ticket at Mammoth. We will always remember his smile and that twinkle in his eye. He will be missed.



Team Kea-Nui in Hawaii— Our favorite Kea-Nui Sales Force made Hawaii's Channel 2 KHON weather news— Katie, Michael J, Jim & Ron.



Marie Estocin— co-presented the Michael J. Estocin trophy to Cdr. Micheal Strong, skipper of VF-94 from Lemoore, and his squadron.

happy BIRTHDAY

September

- 7 Ann Kim
- 8 Catherine Ohl
- 10 Beth Cole
- 10 Heinz Waschhauser
- 12 Karen Tallent
- 15 David Meinhardt
- 17 Bob Chapman
- 18 Diana Faust Walters
- 19 Allison Branigan
- 19 Rodney Pyle
- 19 Irene Van Zandt
- 20 Barb Baily
- 21 Richard Cole
- 25 Berthil Escobar

October

- 2 Gene Fulkerson
- 3 Ted Burrell
- 4 Erika Meinhardt
- 4 Bruce Phillips
- 6 Mary Trimmins
- 7 Yvette Sanchez- Owens
- 10 James Davidson
- 10 Susan Gruber
- 12 Lee Harris
- 15 Karen Guth
- 17 Laela Handy
- 17 Linda Jensen
- 18 Judy Sheller
- 19 Terry Powers
- 23 Claudia Nordquest
- 26 Joe Escamilla
- 27 Peter Sindelar
- 31 Hilda King

November

- 1 Linda Newcomb-Mathis
- 7 Stu Baily
- 11 Janet Eischen
- 19 Carolyn Delahanty
- 22 Kathy Bell
- 23 Renee Andrini
- 24 Iris Cochrane
- 26 Rebecca Crocker

OCEANSIDE BEACH CLEAN-UP

IT'S A WRAP

90% of what we picked up on the beach was cigarette butts.

On Saturday, July 16, 2016, **Catherine Ohl** led Pac Rim on the beach at Oceanside's CoastFest to participate in a clean up endeavor. It's hard to believe that over 350 pounds of trash in an hour was collected. It was back breaking work and made even more so since most of what we picked up was cigarette butts.

Rubio's CoastFest, designed to educate the community about ocean conservation, is full of exciting freebies and activities, including prizes from the Rubio's prize wheel, face painting, an ocean-pledge wall, complimentary food and drinks, the Ocean Institute's "Ocean in Motion" aquarium touch tank, a photo booth to capture the day's memories, a Kids' Zone, an inflatable jumpy house, a mobile learning center courtesy of the Wyland Foundation, free surf lessons from Surfin' Fire and live music. ■



Help keep our beaches clean— leave only footprints.



This guy built the most incredible sand sculpture with the CoastFest logo.



Amazing FREE shrimp tacos for everyone provided by Rubio's. Delish.



So many people came out to help collect over 350 lbs. of trash in only an hour.

photos courtesy Catherine Ohl

You've got to Love Rubio's

By choosing responsibly sourced seafood whenever possible you help preserve ocean species and ensure a healthy ocean for future generations.

That's why Rubio's goes the extra mile in their food procurement and preparation.



- Rubio's serves responsibly raised sustainable seafood whenever possible.
- Rubio's celebrates World Oceans Day each year in June, and has given away over 110,000 reusable tote bags to help prevent plastic from ending up in our ocean.
- Rubio's uses compostable packaging, and recycle plastic and glass bottles in their restaurants when the infrastructure exists. Rubio's strives to be an eco-friendly restaurant.
- Rubio's also participates in local community events that support the ocean, sustainability and the environment.

Rubio's will also be a sponsor at International Clean-Up day on September 17, 2016. Participants will each receive a coupon for a free taco at Rubio's. ■



WATER SPORTS ON THE COLORADO RIVER

IT'S A WRAP

Needles Marina welcomes the Radar River Rats

More photos can be found at radarriverrats.org

July 22—24, 2016



The lagoon with the river in the background. Good to be back.



Gathered under the shade of the club's new tarp. Good job on this Gene.



A snooze in the shade after all the fishing Mark did.

August 5—7, 2016



Alexia is soooo cute. She had fun in the water with parents Troy & Seena.



Threatening clouds all around us but we stayed dry.



Another beautiful sunset.

August 19—21, 2016



Agnes, Simone and Trudy getting ready for another ski and board run.



Again we missed all the rain... thunder was SOOOOOO loud.



Agnes with her grand daughter Kristen and daughter now living in Havasu.

photos courtesy Catherine Ohl

FWSA 2016 CONVENTION

IT'S A WRAP

It's a Hat Trick for Pac Rim... Congratulations.

The 84th annual Far West convention took place in Phoenix, AZ, June 9–12, 2016.

Gene Fulkerson did an excellent job as the new FWSA Councils' Man and Woman of the Year Chair. He took the competition to another, more relaxed, level.

Catherine Ohl continues as award chair and did an excellent job with the awards and slide shows.

John Watson, wearing a couple of hats, History awards chair & President Far West Ski Foundation, was around sharing his knowledge and expertise.

Jane Wyckoff was in charge of it all. She executed another flawless convention. Most of us have no idea of the hours and hours it takes to pull this off every year. Thank you Jane for all that you do.

Pac Rim Wins

It was a great convention for Pacific Rim!

Pac Rim's "UPdate" newsletter won a first place Wentworth award while Pac Rim's website earned another first place. Thank you, Catherine, for a job well done and congratulations on another hat trick with the 1st place Tollakson award. We competed in the Master's Division.

Pac Rim was also awarded a second place in the Double Diamond division of the Charity Competition. FWSA made a \$50 donation to our favorite charity, Can Do MS in Avon, CO.

Far West Silent Auction

Pacific Rim was represented by attendees Catherine, Gene, **Claudia Nordquest**, **Jane Wyckoff**, **John & Claudia Watson** and **Lou Courtney**.

Once again we had lots of fun running



photos courtesy Catherine Ohl

Far West's new board. Some new and younger faces stepping up with fresh and exciting ideas. Can't wait to see what 2017 has to offer.

around trying to outbid our fellow skiers. Claudia won everything she bid on while Gene was outbid on everything. There's always next year.

We really enjoyed meeting with the special guests. We got to spend a lot of time with them on Friday. We especially enjoyed talking to **Jordan Romero**— an outstanding young man.

The Convention

Arizona Ski Council did a fabulous job on the convention. It wasn't even that hot. The three days went by way too fast. We attended the Awards Luncheon, Awards Dinner Dance (great music) and all the parties. It was wonderful to have the time to catch up with old friends in both the ski clubs and the industry. We especially enjoyed Jordan's keynote speech.

2017 Far West Convention

The 2017 Far West convention will be hosted by the Intermountain Ski Council to be held in beautiful Boise on June 7–11, 2017. We will be there and make a week of it. There's so many fun things to do in this area. *See page 28* for the current convention information. ■



Pac Rim gets another hat trick in the clubs' communications awards with three firsts.



Gene and Catherine were so proud to nominate one of their favorite Big White Sales Reps, Katie Balkwill, for the Bill Mackey Award.

FWSA 2016 CONVENTION

IT'S A WRAP

It's all good— fun, parties, friends, awards and everlasting memories.



photo courtesy Catherine Ohl

Keynote speaker, Jordan Romero, with his mom and grandparents.



Shakers and Movers of LA Council, Barbara Razo, Jane Wyckoff, Jane Gutierrez and Todd Hood. If you need something done, be sure to ask one these busy folks.



Intermountain Ski Council gave us a hint of what is in store for us next year.

far west **SERVICE AWARDS**

Snow Sports Builders Award **Ronnie Lupe**, Apache Tribal Chair
Jimmie Nunn, Snowbowl Architect
Bob Wilbanks, National Ski Club Newsletter

Hans Georg **Debbi Kor**
 - Long-term contributions Northwest Ski Council

Elizabeth Schatzi Wood **Karen James**
 - Female One or Two-Year Contribution Los Angeles Council

J. Stanley Mullin **Norbert Knapp**
 - Male One or Two-Year Contribution Los Angeles Council

Jordon-Reily **Jo Simpson**
 - Public Affairs Sierra League & Council

Terry Smith **Dale Parshall**
 - Racing Northwest Ski Council

Jimmie Heuga **Dave Ludwig**
 - Humanitarian Hope on the Slopes

Bill Mackey **Katie Balkwill**
 - Ski Industry Employee Big White, Canada

Tommi Tyndall **Telluride**
 - Ski Industry Contribution

President's Awards **Jeannine Davis,**
Steve Nyman, US Ski Team

Bill Berry **Linda McGavin**
 - Hard News Editor "Northwest Snowsports Directory"

Bill Berry **Jordan Romero & Linda LeBlanc**
 - Featured Article Book: "No Summit Out of Sight"

Warren Miller **Warren Miller Entertainment**
 - Modern Media "High Fives Foundation BASICS 5" movie

Safety Award **Sue Rimkeit**, Northwest Ski Council

Western Ski Heritage Award **Jane Jackson**, Arizona Ski History

Man of the Year **Mike Ferketich**, Bay Area Council

Women of the Year **Colleen Stroeder**, Northwest Ski Council

Charity Recognition **Skiyente, Castro Valley, Bay Area Council**

History Recognition **Bay Area Council**

SKI PASS DEALS

PUBLIC AFFAIRS

LIFT PASSES... best of the 2016–17 season passes

There are so many options to choose from for skiing multiple resorts.



Epic Pass

Photo: Vail Resorts

Unlimited access to Arapahoe Basin, Beaver Creek, Breckenridge, Canyons, Heavenly, Keystone, Kirkwood, Northstar, Park City, Vail, Afton Alps and Mt. Brighton. Now includes unlimited access to Perisher Resort in Australia and 30 European resorts.

\$809. Passes on sale for limited time.
www.snow.com.



Mountain Collective

Photo: Whistler / Paul Morrison

Two days each 14 resorts including Alta/Snowbird, Aspen/Snowmass, Jackson Hole, Mammoth, Lake Louise /Sunshine, Squaw Valley/Alpine, Sun Valley, Whistler-Blackcomb. Taos & Telluride resorts recently added. 50% off all additional days.

\$409 while supplies last.
www.themountaincollective.com.



California Pass

Photo: Mammoth Mountain, CA

Unlimited access to Mammoth Mountain, Bear Mountain, June Mountain, and Snow Summit. Pass includes 5 "Bring-A-Friend" tickets for 50% off plus resort wide discounts.

\$849 (\$499 for seniors).
Add \$100 for Premium Pass with 50% off at all Mountain Collective resort.
<http://www.cali4niapass.com>.



Tahoe Super Pass Gold

Photo: Squaw Valley, CA

Ski and ride Squaw Valley and Alpine Meadows with the Tahoe Super Pass, plus Gold and Silver pass holders get limited days at Sierra-at-Tahoe and Sugar Bowl. Gold pass gets you 2 free days at Zermatt, Switzerland, and unlimited 50% discounts on lift tickets at Mountain Collective resorts.

\$849 (Gold \$699 for Sr), \$599 (Silver)
www.squawalpine.com



Rocky Mtn. Super Pass +

Photo: Copper Mountain, CO

The Super Pass Plus offers unlimited skiing and riding at Winter Park, Copper Mountain and Eldora, plus 6 restricted days at Steamboat, 3 restricted days at Crested Butte, 3 restricted days at Alyeska, 7 restricted days at 5 international resorts including Cardrona in New Zealand.

\$589 (\$459 for 70+).
www.skicolorado.com.



M.A.X. Pass

Photo: Big Sky, MT

Five days each, with no blackout dates, at 32 mountains including Alyeska, Crested Butte, Big Sky, Mtn. High, Solitude Steamboat, Winter Park, Big Sky, Brighton, Crystal Mountain, Cypress Mountain, Summit at Snoqualmie, Copper Mountain, Mt. Bachelor, Boreal Mountain and Las Vegas.

\$649 (M.A.X. Pass Add-on for \$299)
www.themaxpass.com.

BC gets a new resort while ski areas in US get big expansions.



Big Sky to Invest \$150 Million Over 10 Years

An ambitious, top-to-bottom enhancement project called “Big Sky 2025” with an anticipated price tag of \$150 million is underway at Big Sky, Montana.

Over the next decade, the Boyme Resorts-owned property plans to install 12 new or upgraded lifts, expand its Mountain Village, add activities, and create new dining options at the mountain.

Off-mountain, Big Sky aims to build affordable housing and add more frequent non-stop flights into Bozeman from more cities. Big Sky 2025 is set to be a phased project, and the initial 2016 – 2017 phase is already in motion.

Telluride Air Service Expands Again

In addition to the previously announced return of regular commercial flights into Telluride Airport, increased traffic into nearby Montrose will also ease access to Telluride this winter.

Montrose is getting new Denver service with the addition of twice-weekly Allegiant Air flights.

In addition, the region will see a major jump in service to Montrose on the American Airlines network. American Airlines will operate twice-daily peak season flights from Dallas/Ft. Worth, including mainline jets.

Flights from Phoenix will run daily through the season, rather than last season’s two to five days a week.

Service will also continue from Chicago and Los Angeles.

Squaw Valley Expansion Plan Gets Initial Approval

A controversial \$1 billion, 25-year development plan for Squaw Valley cleared a major hurdle after the Placer County Planning Commission approved the plan in a 4-2 vote.

Now, the plan moves on to the Placer County Board of Supervisors for the final verdict. If the board approves the plan, developers would have the green light to add about 850 residential units and nearly 300,000 square feet of commercial space consisting mostly of a hotel and retail over the next 25 years.

Plans also call for construction of a 90,000-square-foot indoor adventure center and water park at the resort.

Winter Park Train Service

The Winter Park Express will once again ferry skiers and riders round-trip from Denver to Winter Park every mid-winter weekend this season, for the first time in seven years. The ski train was a popular mode of transportation for skiers coming from Denver when the train operated from 1940 to 2009.

The ski train was sidetracked after the 2009 season due to declining profits, the cost of insurance, and complexities of passenger service on the 62-mile stretch of rail heavily trafficked by freight trains.

M.A.X. Pass Adds 10 More Resorts

M.A.X. , one of the newest products in the rapidly growing space of season passes that offer access to multiple, mostly unaffiliated properties, is adding 10 MaxPass resorts to its roster.

New for this winter, M.A.X. Pass will include Okemo, VT, Mount Sunapee, NH, Wachusett, MA., Mountain Creek, NJ, Buck Hill, MN, Crested Butte and Eldora, CO, Solitude, Utah, Mountain High, CA, and Alyeska, Alaska. These additions bring the grand total to 32 resorts that are accessible to M.A.X. Pass-holders.

Valemount Master Plan Earns B.C. Approval

The Valemount Glacier Destinations Ltd. master plan for a proposed ski resort on Mount Pierre Elliott Trudeau in interior British Columbia has been approved by the government.

Once complete, which is scheduled to take 10 years, the resort is “expected to provide sustainable public access to large glaciers that are more than 9,850 feet in elevation” and have the longest vertical drop in North America at 6,726 feet. ■

If you don't do it this year, you'll be another year older when you do. ~Warren Miller

Late Breaking News—



photo courtesy Whistler / Blackcomb

Vail Buys Whistler

Vail Resorts Inc. has reached an agreement to buy Whistler Blackcomb Holdings, owner of Whistler Blackcomb ski resort. The \$1.4 CAD billion deal is expected to result in Vail's marketing machine to attract greater numbers of international visitors to Whistler Blackcomb.

Vail fees that Whistler (Blackcomb) is really the best positioned North American resort to benefit from the growth of Chinese ski visitation, especially as China starts to ramp up towards the 2022 Beijing Winter Olympics.

News of the sale had a positive impact on Whistler Blackcomb shares, which jumped to \$36.63 CAD per share in Toronto, up by \$11.49 CAD.

Earlier this year, Whistler Blackcomb announced a \$345 CAD-million infrastructure and real estate expansion. David Brownlie, Whistler Blackcomb CEO, will remain chief operating officer.

Whistler opened in 1966, with a four-person gondola, a double chairlift and a day lodge. It merged with Blackcomb in 1997. The combined areas comprise the largest and most visited ski resort in North America.

Pass options will remain unchanged for the 2016–2017 winter season. ■

Bode Miller Sues Head

To protect his family's financial future through endorsements and other earnings, American skiing legend Bode Miller wants to compete in the 2016-2017 World Cup and World Championships. But...

Bode filed a lawsuit against his former equipment sponsor, Head USA, in Los Angeles Federal Court. Although Miller severed ties with the brand before becoming an equity partner with Bomber Ski in 2015, Bode is still obligated to compete on Head equipment until April 30, 2017.

Bode's lawsuit asks the court to invalidate the restriction, allowing him to compete on skis made by Bomber. Bode's legal team is arguing that Head USA is preventing Miller from doing his job by dictating what equipment he can and can't compete on.



Back when Bode joined Bomber, Bode was no longer in the public eye due to his retirement, and his "viability and marketability as a professional ski racer were rapidly dwindling."

Miller turns 39 next month and his return to skiing would make him one of the oldest racers on the circuit. If anyone can do it Bode can.

Will just have to stay tuned and see what transpires. ■

Senior Skiing *by Gene Fulkerson*

I love to ski. I can't imagine my life without skiing in it. Here are some tips to help you enjoy senior skiing.

Get Modern

When I'm on a ski hill, I cringe when I see people in one-piece ski suits, rear-entry boots and skis that are too long. To paraphrase a 70s slogan "We've come a long way, baby."

Modern ski clothing provides warmth, durability and weather resistance.

Modern ski technology makes skiing easier. Get to a resort ski equipment shop. They'll set you up with the best pair of skis & boots for you based on your ability & budget.

Get Fit

Skiing is tough work and you need to be in some kind of "ski fit" condition to really enjoy yourself.

You need enough stamina during the ski day to enjoy your time on the slopes (be it a half day, full day or ski vacation).

Skiing is great exercise and requires at least some strength and flexibility.

Get Lessons

It's never too late to learn to ski. Lessons are an absolute necessity if you are learning to ski at any age.

Even if you have skied for a while, or are coming back to skiing, a "tune up" lesson, clinic or program is a great way to improve your skills.

Get Out There

There are so many options for seniors. AND we have the luxury of skiing weekdays to avoid the crowds on weekends and holidays. ■

WORLD CUP RACES COMES TO SQUAW

PUBLIC AFFAIRS

Seating is basically sold out but there will be standing options for free.

World Cup Event Schedule— March 9-12, 2017

Date	Time	Event	Venue
Thursday, March 9	4-6:30 pm	Opening Apres Party	Village Events Plaza
	6:30 pm	Welcome Party	Village Events Plaza
Friday, March 10	10 am	1st Run Ladies Giant Slalom	Red Dog
	1 pm	2nd Run Ladies Giant Slalom	Red Dog
	1:30 pm	Ladies Giant Slalom Awards	Finish Arena
	4 pm	Concert	KT Base Bar Main Stage
	6:30 pm	Fireworks	KT Base Bar
Saturday, March 11	8-9 am	First Tracks for Club & VIP ticket holders	Meet at Aerial Tram at 7:40am
	10 am	1st Run Ladies Slalom	Red Dog
	1 pm	2nd Run Ladies Slalom	Red Dog
	1:30 pm	Ladies Slalom Awards	Finish Arena
	4 pm	Concert	KT Base Bar Main Stage
	7 pm	Benefit Auction	Main Ball Room at the Resort at Squaw Creek
Sunday, March 12	10 am	ProAm Race	Red Dog
	2:30 pm	ProAm Awards	KT Base Bar Main Stage



Squaw Valley hosts Women's World Cup

Voted 2016 "Best Ski Resort" in North America by *USA Today*, Squaw Valley Alpine Meadows is an internationally renowned mountain resort in North Lake Tahoe that spans over 6,000 skiable acres, with an annual average of 450 inches of snowfall and 300 sunny days.

Squaw Valley Alpine Meadows is proud to host the Audi FIS World Cup on March 9 - 12, 2017.

This marks the return of World Cup ski racing to California for the first time in 19 years. Events held will consist of a Women's Giant Slalom on Friday, March 10, 2017 and Women's Slalom on Saturday, March 11, 2017.

Olympic champions like Squaw Valley's own Julia Mancuso and Mikaela Shiffrin are expected to compete on the legendary Red Dog run, which also played host to the 1969 World Cup and 1960 Winter Olympics.

Join in the Audi FIS Ski World Cup fun at Squaw Valley! Standing room at race arena, awards, music, parades, fireworks, poster signing and vendor village are all free.

Volunteer positions still available at squawalpine.com.

MEET AERIALIST WINTER VINECKI

PUBLIC AFFAIRS

Park City athlete Winter Vinecki helps students "grit it out."



Winter Vinecki fore jumping at the 2015 Deer Valley World Cup. Photo courtesy International Ski Federation.

Winter Vinecki, a 17-year-old Park City athlete, has been a competitive athlete since age five. Since then she has been running races, winning triathlons and spending her winters dominating the ski slopes.

When Winter was nine years old, she completed her first Olympic distance triathlon in under four hours, a distance many said she was too young for.

It would be the last race her dad would ever meet her at the finish line. He died from a rare and aggressive form of prostate cancer shortly after. His death fueled her passion and determination in a way few athletes might experience.

Winter went on to set the record as the youngest person to run a marathon on all 7 continents. Her seventh continent conquered occurred in Greece in 2013.

Winter's determination has translated to successful performances in the first few years of her aerials career. In her

first season on the NorAm tour in 2012, Winter landed five top-10 finishes. She continued to improve and in 2016 won three NorAm events, securing the Grand Prix Title and landing her spot on the U.S. Freestyle Ski Team.

When she's not competing, Winter likes to participate in pretty much any outdoor activity; hiking, running, lacrosse, swimming, biking, you name it. She also loves spending time with her family, especially her three brothers.

Winter works with the non-profit she started, Team Winter, to raise global awareness for the cancer that killed her father.

Team Winter became a vessel for funding prostate cancer research and raising prostate cancer awareness on a global scale.

To date, through her foundation, she has helped raise more than \$500,000 to

aid in research. Her competitive spirit is driving her to play her part in finding a cure for the disease that took her father from her.

Winter currently attends the University of Utah working on a Major in Entrepreneurship and a Minor in Spanish. Her current focus is competing in the 2018 Winter Olympics in aerial skiing.

Winter will be featured in a video shown to nearly 1.3 million students this school year, encouraging them to grit it out during school fundraisers put on by a company called Boosterthon.



For the past 15 years, schools have trusted Boosterthon to increase funds and inspire students through a remarkable fitness and character program.

When asked what the best advice she ever got, Winter's response was "Do what you love and don't give up."

The best advice Winter had for others is to live a healthy and active lifestyle and to help others. ■



photo courtesy Bubba Brown/Park Record

Safety tips from our resident ski junkie—Gene Fulkerson.

Squirters

If you play with high-power water squirters, be sure to keep them away from power lines. If you shoot water at a power line, electricity can travel down the stream of water, right back to you.

Safe Tree Skiing

Many of you may know that I LOVE TO SKI THE TREES! But I understand that tree skiing is one of those aspects of downhill skiing you either love or you hate. If you are open to the wild and wondrous world of tree skiing here's a few safety tips that are going to give you a better experience.

into trouble. This is especially important since tree skiing isn't exactly risk-free!

⇒ Pre-Training Helps

Off season the best route to get used to the trees is to spend some time downhill mountain biking, trail running or rollerblading a course. Get used to the tree-line so you can take full advantage when you've slipped into your skis.

⇒ Traverse Down

Keep in mind that trees are never evenly spaced like you see in storybooks. Traverse until you see a fairly wide lane and start skiing down; when the lane

⇒ Be Set for Hitting a Tree

It's not a matter of "if" but "when" you'll smack into a tree. Don't panic. Take your skis off and use whatever you can to climb out— poles or the tree. You may even be able to roll out. If you are not hurt it's not such a big deal.

⇒ Head for Thicker Trees

If the snow is flying and you're having trouble seeing, head toward thicker trees. When there are more trees the extra coverage helps block more snow and improve your sight line.

⇒ Be Set for an Emergency

Whenever you are tree skiing make sure you have a space blanket, food, mobile phone or radio, water, extra layers, and a first-aid kit. Better safe than sorry!

Tree skiing is loads of fun. Use these practical pointers to stay safe and make your downhill skiing adventures something to remember!

Common Sense Safety Trip

⇒ Wear a helmet

While helmets don't prevent concussions, they can lessen a concussion and will help turn a potentially lethal injury into a minor injury.

⇒ Conditioning

Strength training is good but stretching prepares your body for exertion and sports performance.

⇒ Equipment

Equipment should be properly sized and appropriate to one's ability.

⇒ Use common sense

Don't ski or ride when tired. Drink lots of water. Avoid alcohol. The list goes on.

⇒ Take a lesson

There is always something to learn. ■



photo courtesy Whitewater, BC, Canada

⇒ Ditch the Pole Straps

This one is a no-brainer; it's much better to have to backtrack and find your pole than to get carried off to emergency with a dislocated shoulder. Make your tree skiing safer by hanging onto your poles, don't attach them.

⇒ Always Ski with a Buddy

It's Standard Operating Procedure that whenever you're set to hit the slopes that you ALWAYS ski with a buddy. Not only does this make your skiing adventure more enjoyable, but you know you've got someone that can help if you run

starts to get narrow just traverse until you find a wider opening, and follow this line until you need to traverse again. Just know that one lane isn't going to get you all the way down the hill in one piece.

⇒ Is there Enough Snow?

Make sure you've got at least 6 inches of fresh snow on the top of the hill before you decide to tree ski down. Be wary of stumps and logs that may not be buried early in the season. The last thing you want to do is come flying through the trees and get your tip stuck under a half-covered log or boulder.

TOP ALL MOUNTAIN SKIS OF 2017

EQUIPMENT

Powder evaluated the 2017 skis. Here are their recommendations.

In the gear world, the word versatile is a good thing. Now, after decades of R&D, you can buy one pair of boards—not too fat, not too skinny, not too carvy, not too buttery—to replace a garage full of overly specialized equipment.

When a powder ski can rip a beautiful GS turn, it's no longer just a powder ski. So too, a GS ski that grab onto the ice in the morning and then float through the afternoon dump is exceptional. Thus the simple premise behind what follows—buy the width you need for your favorite (or most commonly encountered) conditions. Then embrace your newfound versatility and go ski everything on the hill.

Powder arrived at Big Sky Ski Resort at the end of February 2016. Every morning and afternoon, skiers were paired with a ski brand and sent to the mountain to get the feel for the next crop of boards. They provided their feedback on every ski they took out on the hill. And the recommendations are...

Nordica Enforcer 93



After the acclaimed 2016 debut of the Enforcer 100, this year Nordica introduces the same ski in a 93-millimeter-width underfoot. It was a runaway favorite at Powder Week, leading the pack among narrow skis on the steep, technical terrain at Big Sky. The ski has limited rocker and, as a result, lots of edge contact. Add in two sheets of metal and a wood core and the Enforcer 93s are quick, chatter-less, and hold up under aggressive skiing. It feels like you can bomb a steep pitch and then shut it down before heading in to the trees with quick, tight turns.

Dimensions: 126-93-114 mm
Lengths: 169, 177, 185, 193 cm
Radius: 18.5 m (@185 cm)
MSRP: \$749

Salomon QST 106



The QST 106, a fast and smooth ski unveiled this year, is Salomon's quiver killer. Across the board, the Powder testers loved this ski, with exception to those who prefer butters and skiing backward. The solution starts with the Spaceframe wood core, milled to lighten the ski up. An edge-to-edge sheet of

titanal that extends beyond the mounting zone and a layer of Salomon's carbon-flax blend top off the construction. It's a light and maneuverable ski with the drive and backbone to respond when they powered down.

The Stella 106 is the women's version of this ski, varying only in its topsheet and mounting point.

Dimensions: 140-106-126 mm
Lengths: 167, 174, 181, 188 cm
Radius: 20 m
MSRP: \$850

Moment Meridian



Fully rockered, the Meridian is Moment's new powder tool. Its wide girth and sidecut make it a bit slow to put on edge, but that only proves this ski is meant for the deep and soft. When you pop out of the trees to race to the chair for another lap, this ski handles speed well. It was among the favorites. Asymmetric tips add sex appeal. This ski bends in all the right places and likes to go fast. It is stable throughout the turn and doesn't have any pop at the end that would send you to the backseat.

Dimension: 136-107-127 mm
Lengths: 171, 181, 187 cm
Radius: 21 m (@181 cm)
MSRP: \$729

J Skis The Masterblaster



If you rip the resort with the occasional powder day, this is your ski. New from J Skis, the Masterblaster is fast, maneuverable, and, simply, really fun. Made with a maple wood core, the strip of titanal in this nimble ski is only six centimeters wide and tapers out before the tip-rise, making it easy to initiate edge-to-edge turns and giving it enough backbone to power through crud. The edge hold is bomber, but the Masterblaster had no problem skiing in six inches of powder, either.

Dimensions: 125-96-114 mm
Lengths: 175, 181, 187 cm
Radius: 17 m (@188 cm)
MSRP: \$666 ■

BUILD YOUR POWDER LEGS

Five ways to prepare for opening day on the slopes by **Gene Fulkerson**.

At the end of every summer, as days get shorter and temps start to drop, many of the world's skier and snowboarders will realize that sitting around the pool and sipping frozen margaritas has left their legs weak and unsteady.

This can be a major concern for anyone that wishes to rip powder and not be the laughing stock of their friends on opening day.

Luckily for those that wish to rip, there are some sure-fire ways to get your weekend limbs back into fighting shape before the first snowfall of the season.

While many seasoned fitness nuts will tell you to hit the gym to get in the best possible shape for winter, we know that most snowboarders and skiers will avoid the gym like the plague, that's why you should focus on five ways you can dial in your legs for powder season in the field and in your home.

Follow these five steps to maximizing your turns this powder season.

Bike Around Town



Bike everywhere, up hills, down hills and across flat terrain.

Biking is not only a great way to build up key leg muscles it also strengthens the knee offering great injury prevention and an excellent form of aerobic exercise.

Adding aerobic exercises to your fitness routine is ideal for anyone who likes those long leg burners.

Practice Yoga



Yoga is not only a great way to build leg muscles and endurance, but also offers increased flexibility and core strengthening for better performance and injury resistance.

Some great yoga poses for snowboarding and skiing include High Lunge, Chair Pose and Warrior II.

Change Your Diet



One great way to make sure you're firing on all cylinders is to maximize your diet leading up to the big day.

Sure this isn't technically a leg exercise, but you can use nutrition to build muscle and aid in recovery.

Eat lean proteins, lots of greens and watch the excess carbs, especially empty ones. If you stick to a beneficial nutrition plan, you will notice your legs kicking into an extra gear in deep snow.

Hike and Scramble



One of the coolest ways to get in shape when leading up to a new season is by hitting the hiking trail. Not only does this build muscles in the thighs and gluteus maximus, but hiking in elevation can help acclimate the system to elevation.

Skate More



While pushing to the convenience store for libation might seem like skating, getting into some nice transition, especially pumping through corners is probably the best way to replicate turning in deep snow.

Blast some heavy metal and pump until your legs are shaking. To maximize results wear a watch and time how long you can pump before getting pumped out. Try to add a minute each week leading up to opening day. ■

Epic SchoolKids Ski Free at some Vail Resorts in Colorado and Utah



Vail offers two limited ski free program for children in Kindergarten through 5th grade. These packs are limited to children residing in their respective states, Colorado or Utah.

Epic SchoolKids Colorado

The Epic SchoolKids **Colorado** Pack is a free program for Kindergarten through 5th graders that provides four days of skiing and riding at each of the state's top-ranked resorts: Vail, Beaver Creek, Breckenridge, and Keystone.

No purchase necessary! It also includes one free first-timer ski or ride lesson with equipment rental.

Registration Instructions

Registration open until October 9, 2016.

Parents can take their children to a participating Front Range **Colorado Ski & Golf**, **Colorado Ski & Sport** or **Boulder Ski Deals** location by October 9, 2017 to register their child in person.

The parent must bring:

1. The child that they are enrolling for Epic Schoolkids (child MUST be present)
2. A physical or digital copy of the student report card/transcript/school ID or birth certificate

Parents can fill out the 2016/17 Epic SchoolKids Registration Form and Season Pass Application in advance to help save time at the retail location.

Once the required documentation is submitted at the store location, your child's pass will be mailed to him/her upon processing. Due to the volume of Epic SchoolKids applications, processing time may vary.

Ski / Snowboard Equipment

For the best deals on gear, including the Junior Trade Program, visit any of the **Colorado Ski & Golf**, **Colorado Ski & Sport** or **Boulder Ski Deals** locations.

The free rental and first-timer lesson must be redeemed as a package and are valid for a one-time use.

Restrictions / Blackout Dates

Ticket use is restricted for the following dates— **Thanksgiving** (11/25/16–11/26/16), **Christmas** (12/26/16–12/31/16), **MLK** (1/14/17) and Presidents weekend (2/18/17–2/19/17).

Pass is NOT valid at Arapahoe Basin.

Kid's Lesson

The program offers one FREE first-timer lesson and rental for participants that have never been on skis or a board before. The lesson is valid for a one-time first-timer lesson at a single resort (not one lesson at each resort).

Advanced reservations are required and lessons are subject to availability. Please call prior to your visit to make your reservations.

Vail: (800) 475-4543

Beaver Creek: (800) 475-4543

Breckenridge: (888) 576-2754

Keystone: (800) 255-3715

Ski lessons are available for kids ages 3+ and snowboard lessons are available for kids ages 7+.



Epic SchoolKids Utah Pack

The Epic SchoolKids **Utah** Pack is a free program for Utah Kindergarten through 5th graders that provides five days of skiing and riding at Park City.

No purchase necessary! It includes one free first-timer ski or ride lesson with equipment rental. ■

Global sea levels are rising as the world's land ice is disappearing.

Sea levels have risen 6 to 8 inches in the past 100 years, and Antarctica has been losing more than 100 cubic kilometers of ice per year since 2002. By the year 2100, the Intergovernmental Panel on Climate Change estimates that sea levels will rise as much as 20 inches.

While rising sea levels ultimately influence the entire planet, they pose the greatest threat to the islands currently residing at sea level. A rising water table is already turning salty in the center of islands, killing staple food crops like taro, and many other kinds of plants.

Here are some of the islands — many of them small nations — likely to face this crisis first.



Kiribati

The Republic of Kiribati, independent from the UK since 1979, is a low-lying island nation comprised of 33 atolls and reef islands and one coral reef island.

The islands are protruding tips of undersea volcanoes only a few feet above sea-level. It's highest point is 266 feet. Most of the island is less than 3 feet above sea level. Kiribati Island Nation is considering moving the entire population to Fiji to escape climate change effects.

Fiji

The people of Kiribati may want to rethink their plans to relocate to Fiji, as this 7,056-square-mile island nation in the South Pacific is pondering its own ways to face the challenges of climate change.

While its larger islands contain mountains as high as 4,000 feet above sea level, Fiji is still concerned about the effects of climate change. As the World Health Organization reports, climate change is expected to influence extremes of too little and too much water in the form of severe storms and droughts.

Further, such extreme weather is expected to make the island's population of 909,000 more sensitive to climate-sensitive diseases, such as water-borne illnesses.

Micronesia

Micronesia consists of 607 islands containing both mountains and low-lying coral atolls in the Pacific. It lies 1,800 miles east of the Philippines. This 270-square-mile nation holds a population of roughly 107,000. The threat is to their existence and survival, not only as a people — but as a culture. They now have just flat beaches — the wash comes in and hits the roots of coconut trees. Experts say sea levels will rise more than 3 feet in the next 90 years, but even a small rise of one foot will be devastating to the nation.



Solomon Islands



Five of the Solomon Islands in the western Pacific have disappeared due to rising sea levels over the past seven decades. Another six islands there have lost more than 20 percent of their surface area, forcing people to relocate.

Sea levels in the Solomon Islands have been climbing by 1/4 inch per year since 1994. The human element of this is alarming. So many people have lost their family home that they've had for four to five generations. It's quite alarming.

Tangier Island, Virginia



Located on the Chesapeake Bay, Tangier Island is about 12 miles from mainland Virginia. A recent survey found that the island has lost two-thirds of its landmass since 1850. Tangier also faces issues because of its location in the center of the bay, as well as its crumbly surface made primarily of sand and silt.

The combination leaves the island fragile and unprotected. There is an engineering proposal for a \$30 million plan that might preserve the island. If not, it is estimated that residents have about 50 years before they will have to vacate. ■

Walt Disney's Sky Crown at Mineral King... the resort that never was.

Mineral King, located along the boundaries of Sequoia National Park, began as a mining area in 1873 but went bust by 1882. The area was put under the jurisdiction of the United States Forest Service in 1908.

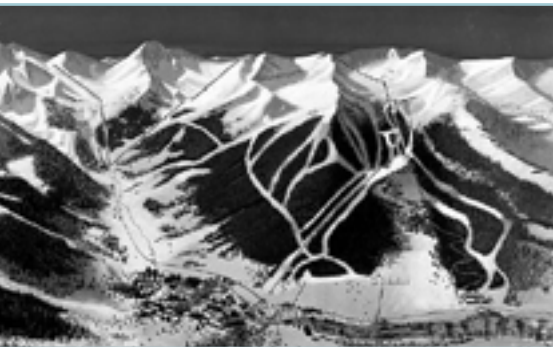
Sequoia National Park boundaries were expanded in 1926 but Mineral King was left out due to the previous development activities. Instead, it became part of the Sequoia Game Refuge.

Mineral King

The designer for the ski facilities was Willie Schaeffler who worked on the 1960 Squaw Valley Winter Olympics. He proposed a trail system that used fourteen ski lifts with 3,600 feet of vertical.

The overall plan would have been a joint project between the United States Forest Service (USFS), who owned the land, and Walt Disney Productions, who would lease the land for 30 years.

Walt Disney Productions was determined to design the Mineral King Resort as a family friendly destination. By targeting families, the resort would be set apart from other ski areas in California. The goal was to become a ski resort where skiing was not necessarily the primary activity for many visitors.



Disney's Sky Crown Vision

Walt Disney envisioned the resort as a year round destination. He expected to



Disney's conceptual drawing of the Sky Crown Village. Drawing courtesy Disney.

lure 60% more visitors in summer than in winter. Some of the summer activities included transforming the ski lifts into a skyway that would transport guests to the resorts multiple trails and fishing lakes.

Cave exploring and nature lectures would also be available. There would be a variety of activities including horseback riding, tennis and swimming.

At the mountains peak, accessible by the ski lifts, would be a restaurant showcasing dances and entertainment nightly. Additionally, the resort would showcase up to ten restaurants from budget to deluxe.

Disney also planned to incorporate a conference center and Disneyland type attractions including the Country Bear Jamboree, which was originally designed for Mineral King and later saw its way into Disneyland Park. The resorts estimated price tag was \$35 million.

Sky Crown's Demise

Transportation would be the most difficult aspect of the resort. Disney proposed a unique way to access the resort. To minimize environmental impact, automobile access to the valley

would be limited.

Resort guests would park at a 3,600-space, underground parking garage located at the foot of the valley then take an old-fashioned cog stream train circling around the side of the mountain to a central station at Sky Crown's Main Street.

The American Forestry Association considered the design for Sky Crown so innovative, that Walt and his design team won an "Outstanding Service in Conservation of American Resources" award in 1966.

The Sierra Club was the first to suggest a ski resort at Mineral King resort due to an agreement they had with USFS over the non-development of San Geronimo. Yet the Sierra Club sued the federal government because the road crossed through Sequoia NP.

While the Sierra Club lost this case, they didn't stop. After arduous efforts, reductions and forced changes, Disney decided that the resort no longer made sense economically and dropped the project. Mineral King was annexed into Sequoia National Park in 1978. ■

100% of proceeds to benefit Can Do MS

Join Pacific Rim for the 16th Annual **Wine Maker Dinner**
A Fund Raiser for MS

October 1, 2016, 5 PM
10818 Viacha Dr. San Diego

\$100

About the Dinner

- Guest Executive Chef Mary!
- Dinner will consist of 7 courses with an exquisite wine specifically matched to each course.
- Dinner typically lasts a fun 5 hours.

Send check for \$100 payable "Can Do MS" to Gene Fulkerson at 10818 Viacha Dr. San Diego, CA 92124
100% of your donation to benefit Can Do MS.



So. California Screenings

Lido Live

Newport Beach, CA
Nov 21

Landmark Regent Theatre

Los Angeles, CA
Nov 22

Squaw Valley Conference Center/Olympic Village Lodge

Olympic Valley, CA
Nov 25 | Nov 26 | Dec 10

Carlsbad Village Theatre

Carlsbad, CA
Nov 26

Bishop High Auditorium

Bishop, CA
Dec 1

Harrah's Lake Tahoe

South Lake Tahoe, CA
Dec 2 | Dec 3

Tickets—

skinet.com/warrenmiller/events

snow jam snowjamshow.com/

DEEP DISCOUNTS ON GEAR, CLOTHING & TRIPS!

Check out the SnowJam Mega Sale for incredible deals on brand-new, brand-name equipment and clothing. It's the pre-season sale of the year!

Get FREE Lift Tickets to

mh MOUNTAINHIGH

\$17 Online (\$20 at the Box Office)
(Admission includes SnowJam Preferred Card membership for the 2016-17 season)

Kids 13 & under FREE with paid adult

snow Jam 2016

Friday, Nov. 11
4pm - 10pm

Saturday, Nov. 12
11am - 6pm

Sunday, Nov. 13
11am - 6pm

Del Mar Fairgrounds
Exhibit Hall

radar **RIVER** rats 2016

colorado **RIVER** skiing/boarding
needles **MARINA**



You must be a current member of the Radar River Rats and sign a Liability Release to participate in our water ski/board events.



photo courtesy Catherine Ohl

\$145**

& water **SKIING** wake **BOARDING** at its very best!

2016 Colorado River **SCHEDULE**

June 17-19

July 8-10

July 22-24

Aug 5-7

Aug 19-21

Sept 9-11

Sept 23-25

Oct 7-9

Oct 21-23

Everyone Welcome

Friends • Family • Beginner • Expert

Please note: Our skis and wake boards are best suited for Beginners to Intermediates. We suggest if you require more advanced equipment that you rent them from your local sporting goods store.

Trip Includes—

- 1 Full & 1 Half Day Skiing/Boarding
- Equipment & Instruction
- Waterfront Camping
- 5 Meals— 3 on Saturday & 2 on Sunday
- Saturday Happy Hour
- Beer, Wine & Soda on Saturday & Sunday

What's Available—

- Location— Needles Marina
- Pool, Showers & Rental Cabins available
- 6 PM Check-in Fri, 5 PM Check-out on Sun
- Option to add Friday Skiing/Boarding

Prices—

- \$145 ** Skier / Boarder
- \$75 Non-Skier *
- \$35 Child age 6-12 *
- Free Child 5 and under*



Must be a member of Radar River Rats—

- * May not ride in the club boat during club hours.
- ** Subject to fuel surcharge if gas is more than \$5/gal

For Trip Information—

Visit www.RadarRiverRats.org
Call [Patricia](tel:323-651-0686) at 323-651-0686 (before 9 PM)

Boat Drivers—

Call [Gene](tel:858-467-9469) at 858-467-9469 (before 9 PM)



Pacific Rim Alliance invites you...

Cabo San Jose, Mexico

October 25– November 1, 2016

Choose your dates & length of stay

Royal Solaris

● *The All-Inclusive Basics*

- Spacious Hotel Room with Stocked Mini-Bar
- Choice of King or 2 Queens
- Unlimited Meals, Alcohol, Soft Drinks
- Five Restaurants & Four Bars
- Two Swimming Pools and Two Jacuzzis
- Steam Room and Fitness Center
- Weekly Activity Programs
 - Beach & Pool Volleyball, Aqua Aerobics, Water Games, Dancing Lessons, Yoga
- Dinner Shows and Theme Nights
 - Mexican, Latin, Cinema Solaris, Evolution of Dance
- Live Music in the Lobby Bar most nights
- Scuba Diving Demo at the Diving Pool
- Taxes & Tips

● *Member Benefits Include*

- Round Trip Transportation from Airport
- Ocean View Room
- Robe & Slippers
- Free Wi-Fi
- Member Gourmet Breakfast
- Premium Bar & Members Only Lounge
- Premium Dinner Menu & Advance Reservations
- Reserved Seating at Dinner Shows
- Caribbean Night with Brazilian Dancers & Fire Show
- Excursion (1 free for 6-day+ stay) choice of
 - Snorkeling, Camel Ride on Beach, Ziplining

● *Pricing* [double occupancy]

\$82* per Person per Day

- Includes Basics and Member Benefits

\$464 for 2 Persons for 4 Nights

- Includes Basics and Member Benefits
- **Must attend a 90-min [low-key] time-share presentation**
- Can add Nights for \$82* per Person per Night

*** Price increases to \$91 pppn after July 10, 2016.**

● *Extras Available (\$)*

- Room Service
- Business Center
- Spa, Beauty Salon and Shops
- Shuttle Service to Cabo San Lucas
- Tours Operated by Outside Company On Site offers Zipline, Fishing, ATV, Diving, Swim with Dolphins

● *The Fine Print*

- Can use Credit Card to Pay [no additional charge]
- Entertainment/Programs subject to change
- Solaris is a time-share and you will be asked if you want to attend a presentation. In our experience, if you say no they will leave you alone.
- Royal Solaris is located in Cabo San Jose, only 15 minutes from the San Jose International Airport (SJD) and just 20 minutes from Cabo San Lucas.
- Trip Insurance is recommended.

BIG WHITE, BC, CANADA

TRAVEL

Pacific Rim Alliance

BIG WHITE SPRING SKIING

April 8 – 15, 2017*

Contact—

Gene Fulkerson

619-804-1939

gene@pacificrimalliance.org

***Customize your trip... pick your days! Lodging/Lift Tickets ONLY \$70 pppd plus Transportation & Parties!**

Basic Trip Includes—

- Lodging (dbl. occ.) at the **White Crystal Inn** in a Superior room with 2 queen beds. Inn is in the Village with easy ski-in/ski-out access.
- Daily Lift Ticket
- Daily Après Parties
- Current Local Taxes

Air—

- Big White can assist you with booking air. Lots of reasonably priced non-stop flights available from various airports. United, West Jet, Air Canada/Jazz and Alaska/Horizon fly into Kelowna from most Western US Cities.

Airport Shuttle—

- Round trip shuttle from the Kelowna International Airport to Big White is \$65.



pacificrimalliance.org



Prices in USD— based on 1USD - 1.3 Canadian Dollars

For more information visit — www.fwsa.org

FAR WEST SKI ASSOCIATION

Breckenridge • Jan. 28 — Feb. 4, 2017



Package Includes:
 Weekend Party
 Skimobile Rent
 Welcome Dinner
 Rental
 Pub Social
 Banquet
 Farewell Dinner Party
 3-4 Day Lift Tickets
 Lodging and Ski Day

CST # 2203493-02

Contact Information

Arizona	Linda Westlund/David Bailey	(602) 721-6133	lwestl@travel.com
Bay Area	Gail Burns	(950) 295-7893	awestlund@stetson.net
Central Intn. Min.	Fred Long	(800) 712-6791	fredl@stetson.net
Los Angeles	Sandy Blackwell	(818) 941-6191	sblackwell@stetson.net
Orange	Jessie Gorman	(714) 743-6521	jessiegorman@stetson.net
Northwest	Rod Robinson	(541) 344-7170	rod@stetson.net
San Diego	Alan Gosholt	(619) 861-6626	alg@stetson.net
Sierra	Debbie Stewart	(530) 737-5862	gstewart@stetson.net

VP North American Travel
NANCY ELLIS
 (530) 414-8261
nwtravelnancy@bcbglobal.net





Must be a member of a Far West Ski Association Club or Travel Member

FAR WEST SKI ASSOCIATION

Presents the 2017 Mini Ski Trip
SUN PEAKS—Cahilty Hotel & Suites
 BRITISH COLUMBIA, CANADA
 March 21 to 26, 2017

Nancy Greene's Cahilty Hotel & Suites has been awarded for
"Best Hotel Service"

Sun Peaks Resort, British Columbia, Canada, is the second largest ski resort in Canada.

Package prices range from \$355 to \$585
 Price does NOT include air & airport ground transfers

Included:
 5 nights lodging (double occupancy) at Cahilty Hotel & Suites, Sun Peaks Resort
 3 or 4 day lift tickets @ Sun Peaks Resort
 Ski in/Ski Out
 Welcome Party
 Farewell Dinner/Party

Optional activities:
 Cross Country Skiing
 Snow-shoeing
 Snow-mobiling
 Dog sledding



Contact Gloria Ramirez
 661-826-3229 or 661-826-3229
gar@2011@gmail.com

Must be a Member of a Far West Ski Association affiliated club or a FWSA Direct Member
 FWSA CST #2203493-02

For detailed sign-up and registration information, go to the www.fwsa.org and click on the "Travel" tab.

INCLUDES: 101 SKI DAYS

FWSA 2017 Int'l Ski Trip to St. Anton am Arlberg, Austria

March 12-19, 2017 (SFO & LAX Group air departs Mar 11*)

Optional Extension or Stand Alone trip to Vienna and Budapest
 March 19-26, 2017

Air Transportation Information:

- **BASIC** trip: Estimated SFO air = \$1186.00* Estimated LAX air = \$1153.00*
- **BASIC & Extension** trip: Estimated SFO air = \$1252.00* Estimated LAX air = \$1189.00*
- **Stand Alone** trip: Air will be booked individually — contact Debbie Stewart for price quote

(Alternative airport arrangements may be made and deviations are limited)


*All prices DO include estimated Fuel surcharges, Taxes and current Exchange Rate — subject to change. If you are arranging your OWN flights but wish to take the FWSA bus transfers, you must coordinate your flight schedule with the FWSA group air schedule. No special alternate pick-up or drop-off for the bus will be permitted. www.fwsa.org is recommended to view FWSA air transportation!

St. Anton Land Package Information:

The St. Anton land package pricing is based on a minimum of 34 people and the Extension pricing is based on a minimum of 34 people — subject to change if requirements are not met. All local taxes are included. The pricing is based on the Exchange Rate of 1.08 US Dollar vs. 1 Euro — subject to change.

Land Package at Hotel Schwarzer Adler (not including Air) — **\$2188.00 — \$2460.00 pp Dbl. Occupancy**
 Single Supplement extra. ➤ Suite rooms are available — guidelines are limited.

Pricing based on a min. of 34 people & current exchange rate of 1.08 US Dollar vs. 1 Euro which is subject to change




Santer Anton am Arlberg, commonly referred to as St. Anton, is one of the most beautiful settings in the Tyrolean Alps which is frequently listed as one of the top ski resorts and sports ski locations. 80% of state-of-the-art cable cars, chairlifts and T-bars taking you to the top at 3,222 ft., providing a vertical drop of 4,844 ft. and its longest run of 9.3 miles. It boasts interesting slopes for all levels of skiers and is one of the historic resorts in the "Steel of the Alps". It also offers 41 kilometers of prime country skiing, snowshoeing, snow shoeing and much more. St. Anton is part of the Arlberg area of ski resorts which means your afternoon tea including pastries, coffee, hot or coffee at the Hotel Schwarzer Adler.

Arlberg Ski Pass invites you to ski several resorts including St. Anton, St. Christoph, Stubai, Lech and Zurs. The village itself is a charming pedestrian resort accented with specialty stores, sport shops, restaurants, bars and après ski locations.

Land Package Includes:

- All airport ground transfers with Multi-lingual guides meeting the FWSA Group air pickup upon arrival.
- 7 night accommodations with breakfast daily and Free Wi-Fi throughout the hotel.
- 8 Dinners at the hotel — 2 nights on your own to experience the local Austrian restaurants of your choice.
- Welcome/Orientation and Farewell Party.
- Gratuities for bus drivers, transfer guides and restaurant staff.
- Afternoon tea including pastries, coffee, hot or coffee at the Hotel Schwarzer Adler.
- Après ski party — details to be provided.
- Optional day tour — details to be provided.

Make checks out to: Far West Ski Association (FWSA). Please reference "FWSA 2017 AUSTRIA Trip" on each check.

Send to: Debbie Stewart
 FWSA VP of Int'l Travel
 628 S. Dewick St.
 NASHA, GA 30277
DebbieStewart@fwsa.org or call 530-737-5862


CST # 2203493-02

ALYESKA---IDITAROD

Far West Ski Association
 2018 Alyeska/Iditarod Trip
 February 25—March 4, 2018

Package price range \$ 1,130—\$1,410
 Air/Ground NOT included
 Optional Activities NOT included

"The Voice of the Western Skier"



Alyeska Resort is located 40 miles southeast of Anchorage. The Hotel Alyeska is a luxury ski inn/bed and breakfast within the Chugach Mountain wilderness. Optional activities available.

The Hotel Captain Cook is located in downtown Anchorage within walking distance to the Opening activities of the Iditarod. Optional activities available.

Contact Gloria Ramirez, Trip Leader
 661-826-3996 or 661-826-3229
gar@2011@gmail.com

Nancy Ellis, VP North American Travel
 530-414-8261 or 530-582-0566
nwtravelnancy@bcbglobal.net

Must be a Member of a Far West Ski Association affiliated club or a FWSA Direct Member

Included:
 ALYESKA RESORT:
 Welcome Party
 Farewell Party
 Lift Tickets

ANCHORAGE:
 The Northern Lights
 Iditarod Events
 Fair Breakfast

Optional Activities:
 Wildlife Tour
 Dog Sledding
 Glacier Walk
 Glacier Cruise
 Hot-Sauna
 Sleigh Rides
 Anchorage Museum
 Flightseeing Tours
 And More.....

SPORTSAMERICA
 FWSA CST #2203493-02

FAR WEST SKI ASSOCIATION

TRAVEL

85th Annual Far West Ski Association Convention
June 7-11, 2017
BOISE CENTRE
850 W. Front St., Boise, ID 83702
208-336-8900 • www.boisecentre.com

hosted by
*Bogus Basin Ski Club &
Intermountain Ski Council*

boise

boise
Intermountain Ski Council
active exciting relaxing cultural
Bogus Basin Ski Club

THE GROVE HOTEL — DOWNTOWN BOISE
245 S. Capitol Blvd., Boise, ID 83702
www.grovehotelboise.com

Reservations call **888-961-5000** or **208-489-2222** Option 1
Group Name **Far West Ski Association**

Reservations Online at <http://bit.ly/FWSA2017-lodging>

Room Rates per night plus tax single or double occupancy — **\$134**
Room Registration Deadline May 16, 2017

HOTEL FEATURES

- The Grove Fitness Center and Spa
- Emilio's Restaurant
- The Bar
- NO resort fees, FREE Wi-Fi in guest rooms
- Self-Parking \$10 / Valet \$16
- Rates are available 3 days pre and post Convention
- Walking distance to shops, restaurants, museums, theaters & more.

TRANSPORTATION

- Air Transportation is via Boise Airport (BOI), located 10 minutes from Boise Centre.
- Rental cars and shuttle services are available at the airport.

CONVENTION HIGHLIGHTS

- Silent Auction
- Travel Expo
- Snowsports Leadership Academy
- Celebrity Speakers
- Public Affairs Panels
- Saturday Awards Luncheon
- Saturday Awards Dinner
- Far West General Meeting & Elections

OPTIONAL ACTIVITIES

- **Wednesday**
 - "A Taste of Idaho"
(Hot Springs & Dutch Oven Dinner)
- **Thursday**
 - White Water Rafting Payette River
 - Boise River Green Belt Bike Tour
 - Albertson Stadium & MK Nature Center Tour
 - Downtown Boise Pub Crawls
- **Friday**
 - 11th Annual Michael German Memorial Golf Tournament
 - Day at Bogus Basin Mountain
 - Fountain Party (Grove Plaza)

Jane Wyckoff
FWSA Convention Chairperson
janewyckoff1@cox.net or 949-933-9607

Jeannine Davis
Silent Auction Chairperson
SilentAuction@fwsa.org or 415-328-2333

Mike Bouton
Intermountain Host Council Convention Coordinator
mbouton0559@msn.com or 208-703-0444

www.fwsa.org

For more information visit — www.fwsa.org

For more information visit — www.lacouncil.org

HOLLYWOOD



SNOW GALA 2016

10.22.16

6:00pm - Midnight
Embassy Suites El Segundo
1440 E. Imperial Avenue
El Segundo, CA 90245

6pm - No Host Bar Opens
7pm - Seated Dinner

\$75 per person
RSVP w/ Menu Choice by Sept. 30th
to Karen James
1812 Vickers Dr. Glendale, CA 91208
kjames48@sbcglobal.net

WE ARE ROLLING OUT THE RED CARPET TO CELEBRATE...

"MOVIE MEMORIES"



PRESENTED BY
LOS ANGELES COUNCIL OF SKI CLUBS

Check or Money Order payable to LA Council
Please see Reverse Side for More Information

Ski Dazzle

THE LOS ANGELES
SKI SHOW 2016
DECEMBER 2, 3 & 4, 2016

Nation's Largest Consumer Ski and Snowboard Show

Friday, December 2 4pm-11pm
Saturday, December 3 11am-10pm
Sunday, December 4 Noon-6pm

LA Convention Center - SOUTH HALL
1201 South Figueroa, Los Angeles, CA 90018

FREE LIFT TICKET OFFER

You can choose ONLY one (1) from column A, B, C, D, E or F below.

A	B	C	D	E	F
<p>Free Lift Ticket One Day From 8am-5pm Nov. 18, 19th or 20th @ 11:00 AM</p>	<p>Free Lift Ticket Two Day From 8am-5pm Nov. 18 & 19th @ 11:00 AM</p>	<p>Free Lift Ticket Three Day From 8am-5pm Nov. 18, 19th & 20th @ 11:00 AM</p>	<p>Free Lift Ticket One Day From 8am-5pm Nov. 18, 19th or 20th @ 11:00 AM</p>	<p>Free Lift Ticket Two Day From 8am-5pm Nov. 18 & 19th @ 11:00 AM</p>	<p>Free Lift Ticket Three Day From 8am-5pm Nov. 18, 19th & 20th @ 11:00 AM</p>
<p>+ Free Shuttle to the Show</p>	<p>+ Free Shuttle to the Show</p>	<p>+ Free Shuttle to the Show</p>	<p>+ Free Shuttle to the Show</p>	<p>+ Free Shuttle to the Show</p>	<p>+ Free Shuttle to the Show</p>

OFFER TICKET RULES:
This offer is for the person whose name appears on the lift ticket. The lift ticket must be used by the person whose name is on the lift ticket. The lift ticket must be used by the person whose name is on the lift ticket. The lift ticket must be used by the person whose name is on the lift ticket. The lift ticket must be used by the person whose name is on the lift ticket.

DISCOUNT CARD OFFER



30% OFF any Rental Ski or Snowboard Package for pre-press requiring April 1st, 2016

\$500 OFF on a Free Trip Package for any Adult Snowboard Package (Ski, Rent, Binding)

TICKET PRICES — \$20 (Adult 13+) \$5 (Child 6-12)
<http://www.skidazzle.com/losangeles.htm>

BRECKENRIDGE COLORADO

JAN 28 - FEB 4 2017

Far West Ski Association Annual Ski Trip

Trip Leader - Sandy Blackwell

We're going to Breckenridge! Sign up Early!

Registration & Welcome Bag, Welcome Party

Seven Nights Lodging

Concierge dinner

Pub crawl, Mountain picnic

Cocktail parties, Après party

Activities fee for: races and scavenger hunt

Ski week banquet w/ dancing

Payment Schedule
(Trip insurance is highly recommended)

March, 2016: \$200 at sign-up

Due before July 15, 2016: \$275

Due before Sept 15, 2016: \$600

NO REFUNDS AFTER OCTOBER 21st

Due before Nov 5, 2016: Balance

Pricing: \$1,185 (hotel) or \$1,085 (condo) each per person

(to attend this trip you MUST pay a minimum of \$1,000 deposit and a \$1000 final payment)

ADDITIONS OR REDUCTIONS TO COST OF THE TRIP

- 3 day adult lift ticket \$175
- 4 day adult lift ticket \$225
- 5 day senior lift ticket \$150
- 6 day senior lift ticket \$180
- Eye Pass (Colorado): \$50 or \$60 if purchased through Sports Authority Tours, you get 10% lodging reduction for this trip
- Eye Pass \$200 (includes ski days, no blackout dates, multiple resorts) (single/double apartment/condo/chalet)
- Eye Pass \$100 (7 ski days, no blackout dates, limited resorts)
- Eye Pass \$50 (3 ski days, no blackout dates, limited resorts)
- Eye Pass \$25 (1 ski day, no blackout dates, limited resorts)

(Insurance of your lift ticket is not included in the price of the lift ticket. You must purchase your own lift ticket insurance.)

(Lodging and ground transportation are available through Far West Ski Association's competitive pricing. If you have your own car and ground transportation through Far West Ski Association you will miss your ground transportation to airport delays. Please call for more information on alternative transportation to your lodging.)

Please report your lodging needs to Sandy Blackwell. Confirm to all hotel lodging. Ski lift and using the Beaver Run Super chair, sky walks between buildings, coffee house, cable TV, workout facility, ski storage, laundry, pool, outdoor hot tubs, hot service spa, 10 speed internet, Break Sports on site, daily housekeeping, laundry facility available, AOP rooms available.

\$1,185 Beaver Run Hotel: (2 people per unit, 5 units, 10 pillows)

\$1,085 Beaver Run Condo: (4 people per unit, 10 units, 40 pillows)

For more information: Sandy Blackwell (818) 414-8191 e-mail: sandyblackwell@gmail.com

Sandy Blackwell operates for LACSC for Skiing, Snowboard, & Co. Blvd 2011, Glendale, CA 91208

I, _____, hereby agree to pay the amount of _____ to the Los Angeles Council of Ski Clubs for the purpose of _____ and I understand that I am not responsible for the amount of _____ and I understand that I am not responsible for the amount of _____.

Address: _____ City: _____

Name: _____ Phone #: _____ Email: _____

Name you go by: _____ Membership Preference: _____ and government: _____

Lodging choice: _____


How do you prefer to pay:
 1 day adult lift ticket \$175
 4 day adult lift ticket \$225
 5 day senior lift ticket \$150
 6 day senior lift ticket \$180

Your lift ticket:
 Yes
 No

FREEDOM FOUND

MY LIFE STORY

NEW



Warren Miller's Latest Book

In this soul-searching autobiography, Warren reveals the secrets of his past and the peaks and valleys he navigated in bringing the sport he loves to audiences worldwide. Freedom Found is a must-read for Warren's legion of fans, ski history enthusiasts, adrenaline junkies and anyone whose interest is piqued by an extraordinary 20th-century success story.

SAN DIEGO COUNCIL OF SKI CLUBS

TRAVEL

Please Join Us....

Friday Night

... in the City




5:30-6:30 No Meet bar
6:30-7:30 Dinner
7:40-8:00 Awards
8:00-10:00 Dancing - DJ

Friday, November 4, 2016

To Honor
Ski Club Men & Women of the Year
& Joe Harris Award Recipient

To RSVP
Make checks to SDCSC
and Mail to:
Jean McCasey
10635 Esmeraldas Dr
San Diego, CA 92124

Tickets only \$45/person*
*until Oct. 24, then \$55/person.
Tickets non-refundable
Sorry no walk-ins
Attn: Business Casual

Holiday Inn Bayside Harborview Room - 5th Floor
4875 N. Harbor Dr.
San Diego, CA 92106

Questions?
Call 858 560-8722

SDCSC 2016 08 12



ASPEN SNOWMASS

THE POWER OF FOUR

San Diego Council of Ski Clubs Presents
ASPEN IN DECEMBER
December 8 to 14 2016
Ski Ajax, Snowmass, Aspen Highlands and Buttermilk



Fly direct San Diego to Aspen (subject to change)

Price \$1265
Seniors \$1165

The Guest
A Four Star Condo complex just 3 blocks from the Silver Queen Gondola at Aspen Mt. (Ajax to locals)
June 26 Sign Up Party
2 Dinners 11700
Carnegie Promenade, SD
92131-0814

Arrival & Departure Parties
Enjoy Christmas Shopping at it's finest. You'll be loved by your loved ones for their gifts from Aspen.

Payment Schedule:
• \$300 by 26 June
• \$300 by 21 July
• \$665 by 30 August

Call Now Mike & Ellen Sanford
858-495-1442 (8)
check made out to San Diego Ski Council to Mike at 11700 Carnegie Promenade, SD, 92131

Cancellation Fees
\$100 after 15 Jul
\$150 after 30 Aug
Total after 30 Sept

Or mail
Ski Council to Mike at 11700 Carnegie Promenade, SD, 92131

Far West Ski Association

Ski Week

Breckenridge, CO

January 28 - February 4, 2017



2,900 Acres / 187 Trails / 3,390' Vertical

\$1600 Hotel
\$1500 Condo
per person

Group Air & Ground
• Waiting for Airlines to post flights
• Plus in our Southwest

Hilton DoubleTree
• 1 Bedroom King or 2 Queen
• Access street from Peak 7
• Ski Valet & Shuttle to town
• On-Site Bar Lounges, Restaurant & Spa

Beaver Run Resort
• Ski Valet
• Hotel (201) and 2-bedroom Condos (20,700)
• On-Site Bar Lounges, Restaurant & Spa
• Pools and (A) Hot Tubs
• Ski Transport on site

FWSA Package Includes:
• 7 Nights Lodging (Hotel, con.)
• 3 day adult lift ticket included
• No lift ticket deduct \$275
• 5-day senior deduct \$43
• 6-day adult additional \$24
• 6-day senior deduct \$10

Payment Schedule
• \$100 deposit
• \$400 by 20 July
• \$400 by 20 Aug
• \$400 by 20 Sept
• Balance by 20 Oct


Cancellation Fees
• \$125 after 25 Jul
• \$910 after 25 Aug*
• Total after 25 Oct**
*If replacement found transfer fees apply
**The name of my stevedore!

Skiing in Utah or Tahoe too?
Purchase an EPIC Pass from FWSA and save additional \$50
www.epicpass.com
888-475-8911 ext.112

Mail check payable to San Diego Council of Ski Clubs to:
Alan Godwin
4678 Muir Ave
San Diego, CA 92107


Travel Insurance is recommended. CST #2083129-40

FAR WEST SKI ASSOCIATION
FOUNDED 1932



CRUISING THE ADRIATIC AND DALMATIAN COAST

Including 1 Night in Dubrovnik



ALL LOUING ACCOMMODATIONS INCLUDED

Seven nights accommodations aboard the MS Romantic Sea

10 DAYS + 22 MEALS

2017 Departure Date:
September 21
(Ski Club Membership Required)

MayflowerTours
Life Enriching Experiences

For more information visit — www.skisandiego.org



California Coastal Cleanup Day San Diego County

Saturday, September 17, 2016 from 8AM - 12noon

Join 8,000 volunteers for this countywide cleanup project as we beautify 100+ cleanup sites countywide.

Check out the full list of sites at www.cleanupday.org

If you are not sure which site you would like to volunteer at, check out one of the sites highlighted in green. These sites are in need of volunteers!

Bring your cleanup into the 21st Century by downloading the app **Clean Sweep** to track your litter data while you clean up! Clean Sweep is available on your Android or iPhone device!



Mission Beach - Belmont Park
Meet on the grass south of the rollercoaster at Belmont Park in Mission Beach, San Diego.

Special Instructions—
All volunteers should wear comfortable closed toed shoes and sun protection. Help reduce waste by bringing your own reusable water bottle, gardening or work gloves and a bucket to collect litter.

To Sign-Up / Donate contact—
Catherine Ohi, 858-405-0637
ohi@catmeowz.com




Support the **United States Adaptive Recreation Center**

Registration—

- Read FAQs/Ride Information at usarc.org/peak-to-peak-pedal
- Register online at firstgiving.com/usarc/p2p22
- Need assistance? Contact USARC at 909.584.0269

September 7, 2016
Registration deadline with a non-refundable deposit of \$500.

October 5, 2016
Remit at least \$2,000. \$1,000 is tax-deductible for riders sponsoring their own entry.

PEAK TO PEAK 22 Big Bear to Mammoth 10.5-9.16



Walk4ALZ | San Diego

Alzheimer's | JAN 2000

Location: **Balboa Park, San Diego**
Date: **Saturday, October 15, 2016**
Registration: **6:30 a.m.**
Opening Ceremony: **7:30 a.m.**
Walk Starts: **8:00 a.m.**
Route Length: **2.75 Miles**
Team Name: **Pat's Pride**



Join / Donate at <http://bit.ly/PatsPride>

SKI OR RIDE FOR MS 2017

Saturday, Feb. 25 | Squaw Valley, CA



EVENT HIGHLIGHTS

- BREAKFAST | LIFT TICKETS
- POKER RUN | FUN RACE
- APRES PARTY | PRIZES

Proceeds to benefit Can Do MS's lifestyle empowerment programs.

To Sign-Up / Donate contact—
Catherine Ohi, 858-405-0637
ohi@catmeowz.com

TRIP SIGN-UP FORM



ALLIANCE

Trip/Event: _____ Trip/Event Dates: _____

If you don't have a roommate yet, just fill in the information for Participant 1. If you have more than one roommate, fill out the appropriate number of forms. Single Supplement is usually available upon request. Download Liability [Form](#).

Description	Participant 1	Participant 2 (Roommate)
EXACT Name on Passport		
Street Address		
City, State, Zip		
Email		
Cell Phone		
Home Phone		
Date of Birth		
Passport Number		
COUNTRY Passport Issued		
Date Passport ISSUED		
Date Passport EXPIRES		
Bedding ("2 beds" or "matrimonial")		
Cost — Basic Trip (PP)		
Cost — Extension (pp)		
Single Supplement (Call for price)		
Membership (\$8 single/\$10 family)		
Deposit		
Final Payment		
Departure Airport, Date & Time		
Departure Airline & Flight #		
Return Airport, Date & Time		
Return Airline & Flight #		
Special Requests		

Send form(s) with your payment to Pacific Rim Alliance, 10818 Viacha Dr., San Diego, CA 92124. To expedite the process, email this completed Trip Form to gene@pacificrimalliance.org. For information contact [Gene Fulkerson](#) or call 858-467-9469.

Pacific Rim Alliance Photography Policy:

By attending a Pacific Rim Alliance Event (the "Event"), you consent to being filmed and or photographed, whereas your image, voice, and likeness may be used by Pacific Rim Alliance for promotional purposes. Any photograph taken at the Event, whether in digital or analog format, is subject to mandatory, non-exclusive license to the Pacific Rim Alliance for use in Event promotional purposes.



MEMBERSHIP APPLICATION

ALLIANCE

ALL Pacific Rim Alliance attendees must be a member to participate in one of our trips. Our membership year is from July 1, 2016 through June 30, 2017.

To join the Pacific Rim Alliance, fill out the following, Sign your release of liability and send with your check [payable to Pacific Rim Alliance] to:

Pacific Rim Alliance
10818 Viacha Dr., San Diego, CA 92124

Name [1]: _____ Name [2]: _____

Home Addr: _____

City: _____ State: _____ Zip: _____

E-Mail Addr [1]: _____

E-Mail Addr [2]: _____

Cell [1]: _____ Cell [2]: _____

Home: _____ Work [1]: _____

Birthday [1]: _____ Birthday [2]: _____

Indicate Membership
[Includes membership in FWSA, LA & San Diego Councils, NSAA]

- \$8 INDIVIDUAL Membership
- \$10 FAMILY Membership—Significant other, spouse, children, friends residing at same residence qualify.

Photographs of members participating in club activities are routinely included in a newsletter or on our web site or facebook which is distributed to the membership and other interested parties and is made available to the general public. Signature is required below to agree to this and to the terms of the Release of Liability to the right.

Signature [1] _____ Date

Signature [2] _____ Date

Release Of Liability, Waiver Of Claims, Express Assumption of Risk and Indemnity Agreement

WAIVER: I am aware that participation in the Pacific Rim Alliance events has, in addition to the usual risks, dangers and hazards associated with travel, snowboarding, alpine, Nordic, Heli & off-piste skiing, certain additional risks, dangers and hazards including, but not limited to: boarding, riding and disembarking ski lifts; changing weather conditions; exposed or hidden natural or man-made objects; avalanches; failure to ski or ride safely or within one's own ability; and negligence on the part of other skiers and boarders, the organization or their staff.

I freely accept and fully assume all such risks and danger and the possibility of personal injury, disability, death, loss or damage to person or property that may occur as a result of my engaging in the above activities.

I HEREBY RELEASE AND HOLD HARMLESS [releasees Pacific Rim Alliance] WITH RESPECT TO ANY AND ALL INJURY, DISABILITY, DEATH, or loss or damage to person or property, WHETHER CAUSED BY NEGLIGENCE OR OTHERWISE.

I hereby release the releasees, their officers, directors, employees, representatives, agents, and volunteers from liability and responsibility whatsoever and for any claims or causes of action that I, my estate, heirs, survivors, executors, or assigns may have for personal injury, property damage, or wrongful death arising from the above activities whether caused by active or passive negligence of the releasees or otherwise.

MEMBERSHIP has its BENEFITS

The **Far West Ski Association** has an impressive collection of member benefits including trips, lodging, lift ticket and more. Check out the member benefits at fwsa.org.

The **National Ski Council Federation** has also discount benefits for club members which includes lodging, lift tickets, ski rental and so much more.

Check out www.skifederation.org for the complete list of benefits. Go to the "Members Only" area and sign up.

The bearer of this card is a member of the Far West Ski Association and entitled to all the benefits associated with membership in FWSA. This card is non-transferable. Photo ID may be required. Expires 4/30/17.

ALLIANCE



Can Do MS

Everything done at Can Do MS is driven by one simple belief: you are more than your MS. Can Do MS is the start of a whole new way of thinking about and living with multiple sclerosis. For more than 30 years Can Do MS has been empowering people with MS with research, webinars and other programs.

Our next fund raiser for MS will be our annual wine dinner on **Oct. 1, 2016**. For more information contact

Gene Fulkerson
gene@pacifcrimalliance.org
858-467-9469

Can Do MS

[formerly the Heuga Center for MS]
IRS 501(c)(3) Number 74-2337853
www.mscondo.org • 970.926.1290

USARC

United States Adaptive Recreation Center (USARC) is committed to guiding people with disabilities toward the creation and affirmation of rewarding lifestyles. Located in Big Bear, CA, USARC runs an adaptive ski school in the winter. In the summer USARC takes to the fresh waters of Big Bear Lake for wild adaptive water sports.

Volunteers and funds are always needed. To volunteer contact **Sara Richter**, Outreach Coordinator, sara@usarc.org.

Peak to Peak Fund Raiser

The Peak to Peak Pedal is a life-changing event, not just for the cyclists, but for those whom the ride supports. **To join or donate, visit First Giving at bit.ly/1jvoqYa.**



October 5-19, 2016



Recycle Program

Pacific Rim recycles cans, bottles and glass at all our events. Each quarter we donate the proceeds to a charity.

This quarter's donation goes to **Alzheimer's** on Saturday, October 15, 2016, in Balboa Park, San Diego. To race or donate visit our [team page](#).



AmazonSmile is a simple and automatic way for you to support your favorite charitable organization every time you shop, at no cost. For more information, to sign up & shop visit— smile.amazon.com/.

The Unrecables

{re}Register Ralphs Card [each Sept]

The Unrecables Ski Club is a non-profit, volunteer-based organization, serving the recreational needs of people with disabilities. They promote adaptive sports, and encourage people with disabilities to participate in sports, recreational, and social activities in their

communities. The club is a member of the LA Council of Ski Clubs.

Log in to www.ralphs.com. Click on **Community Contribution**. Click on **Participant**. Follow the easy steps to enroll. **Their NPO# is 80831**. Be sure to complete all information.

To volunteer visit unrecables.org or email info@unrecables.org.





THE FINE PRINT

ALLIANCE

About Pacific Rim

Pacific Rim Alliance is all about skiing. We were formed with the express notion of skiing the world and never having to attend a meeting.

Originally we concentrated on skiing exotic resorts in Europe, South America and New Zealand. These have been scaled back due to the weak economy. While many of us are now retired we are looking at locations that fit the quote that "we have more time than money."

We have gotten into the groove of running early and late season ski weeks to Big White Ski Resorts in Canada. These trips run about \$700 per person per week and include hotel lodging

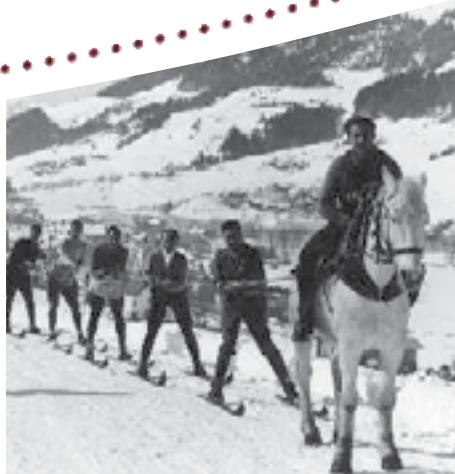
(double occupancy), 6-day lift ticket, ground transfer from/to the Kelowna airport and various parties. We believe that Big White offers the best and most consistent early and late snow.

We do not offer Mammoth trips since there are so many ski clubs in both the Los Angeles and San Diego Councils that offer quality affordable bus trips to Mammoth. Just ask and we'll direct you.

We believe in giving back to our ski community.

- ◆ Our major fund raiser is our annual wine maker dinner for Can DO MS. To date we have raised more than \$36,000.

- ◆ We encourage members to participate in other on-snow fund raisers for so many good causes— Hope on the Slopes (for cancer), Ski to Defeat ALS, USARC Ski-a-thon and the Heuga Vertical Express for MS.
- ◆ We also support junior racers (through the Far West Ski Foundation), Women's Ski Jumpers USA, Wounded Warriors, the Unrecables and others.
- ◆ We are passionate about protecting our earth and the future of skiing.



Official Documents

We are a 503(c)7 not-for-profit corporation founded in 1997 and incorporated in the state of Nevada. We file a Form 990 yearly.

A current copy of our Bylaws and Articles of Incorporation can be found on our [website](#).

Liability waivers are required for membership on all trips and events. Trip waivers can be downloaded from our [website](#).

Ski History

We have a relatively young history as a ski club. Most of our history can be found in our past newsletters and photo galleries cataloged since our beginning.

We also have a collection of histories of ski clubs, councils, the Far West Ski Association and ski resorts in the west. It is a work in progress updated regularly by our Club historian. If you have any history you would like to share, contact **Catherine Ohl** at ohl@acatmeowz.com. Visit our [website](#) to learn more.

Learn-to-Ski Programs

We encourage our members to participate in the National Bring-A-Friend challenge (<http://www.bringafriend.org/>) in January.

There are some incredible deals for first time skiers. It's a great way to get your friends safely on the slopes.

Another significant program is National Ski Safety Month (www.nsa.org/safety-programs/national-safety-month/).



Use your brain, it's the most important part of your equipment.
~Kevin Andrews and Warren Miller, Extreme Skiing

Ski with Pride • Watch all Sides • Let it Ride • First with Safety Awareness



Contact Information

Board of Directors

about Pacific Rim Alliance Snow Sports Club

Catherine Ohl, President,
Historian, Web Master, Editor

ohl@acatmeowz.com

858.405.0637

Gene Fulkerson, VP Travel

gene@PacificRimAlliance.org

619.804.1939

Fay Mumbauer, Director

fay@PacificRimAlliance.org

Patricia Ortiz, Accounting

patricia@PacificRimAlliance.org

Mission Statement

The PACIFIC RIM ALLIANCE is a non-profit organization dedicated to the appreciation of skiing, boarding, sight-seeing, photography, travel, public affairs, our environment and civic awareness. The Alliance is further oriented to the building of international relations among skiers, snowboarders and sports organizations throughout the Pacific Rim.

Surplus moneys above requirements for deposits for future trips will be donated to non-profit organizations devoted to charity, research &

education. We are especially interested in, but not limited to, supporting Ski Area Development, Adaptive Ski Programs, Can Do Multiple Sclerosis, Olympic & Junior Racers and Ski Museums.

The Alliance is a member of San Diego Council of Ski Clubs (SDCSC), Los Angeles Council of Ski Clubs (LAC), Far West Ski Association (FWSA), National Ski Council Federation (NSCF) and an associate member of National Ski Areas Association (NSAA). Membership in Pac Rim allows you to participate in their events and programs. ■



Conduct Policy

This policy applies to all persons participating in a Pacific Rim Alliance Event. All participants are requested to observe common courtesy and generally accepted standards of social and moral behavior.

- ◆ There is a Zero Tolerance Policy on illegal drug use at any sponsored event or trip.
- ◆ Alcohol is allowed in moderation and where permitted by law.
- ◆ Smoking is not permitted when with the group.
- ◆ There is a strict policy prohibiting sexual harassment and harassment because of race, religion, color, national origin, ancestry, disability, medical condition, marital status, sexual orientation, age, or any other basis made unlawful by any applicable law or ordinance or regulation.
- ◆ Profanity and off-color humor is only permitted if it is not offensive to other participants.
- ◆ Parents/Legal Guardians of minor children under the age of 18 are responsible for the supervision and behavior of their children.
- ◆ Board Members will attempt to resolve problems in a mutually beneficial manner. When resolution cannot be achieved, the proper authority will be called to resolve the problem.
- ◆ Participants who violate our Conduct Policy may be excluded from future trips without reimbursement of expenses. ■



FWSA Recognition Programs

Far West Ski Association has an extensive recognition and awards program. Pacific Rim and our members have won numerous Far West awards.

There are a variety of programs for individuals. Submittal deadline is March 20. Details and applications can be found at <http://fwsa.org/MemberCorner/Programs/programs.html>.

- ◆ **Environmental Awardee** wins a 5-night ski trip for two to Aspen/Snowmass, CO.
- ◆ **Western Ski Heritage Awardee** wins a 5-night ski trip for two to Steamboat, CO.
- ◆ **Safety Person of the Year** wins a 5-night ski trip for two to Telluride, CO.

Far West is offering three great prizes that require some thought and work but yields a big reward. ■